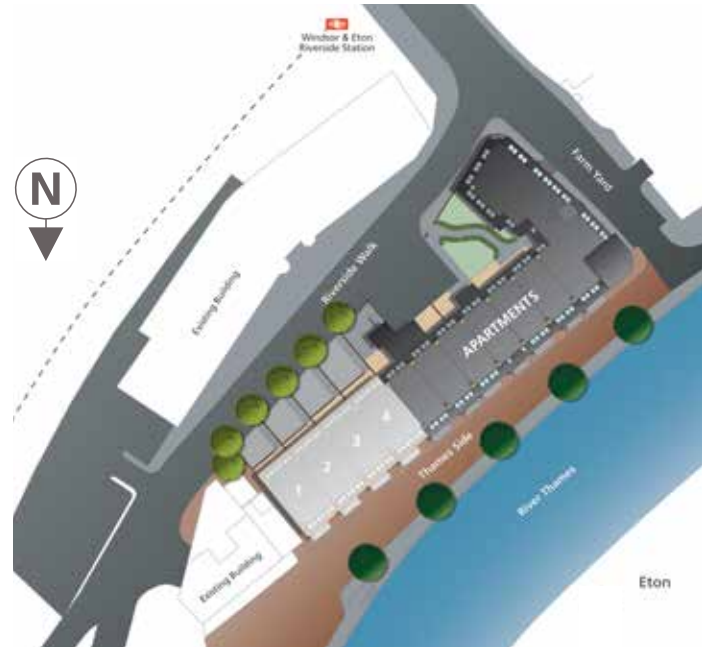


Thameside

The Apartments | Windsor | SL4 1QN



This site plan is a guide for illustrative purposes only. Landscaping shown is indicative only.

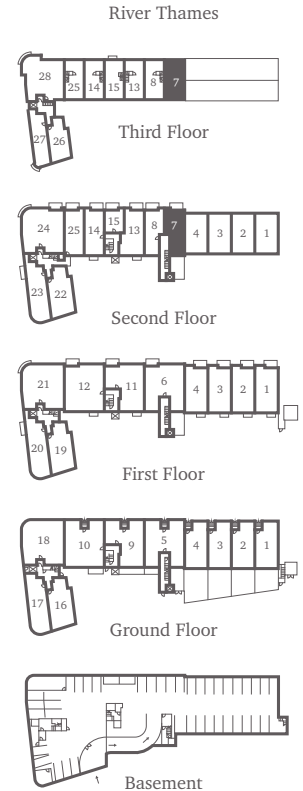
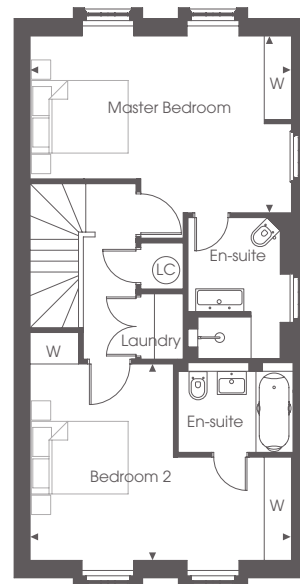
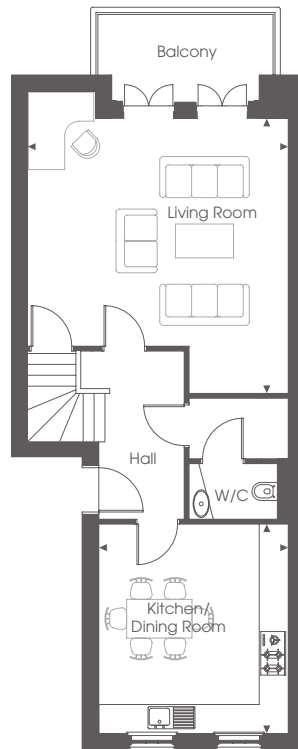
No. 7

Plot 7 is a two bedroom duplex situated on the second and third floor set over 1326 sq ft. On the second floor the duplex consists of a generous sized kitchen/dining area with contemporary kitchen units and integrated Miele and Siemens appliances, a large drawing room leading onto a private balcony, Villeroy and Boch sanitaryware to both the family, en-suite bathrooms and w/c. The third floor consists of both the master and second bedrooms benefiting from fitted wardrobes and luxury en suite bathrooms. This duplex is complete with a colour video entry phone system and two allocated parking spaces in gated basement.

SECOND & THIRD FLOORS

DIMENSIONS

Living Room	5.68m x 5.39m	18'8" x 17'8"
Kitchen/Dining Room	4.33m x 3.92m	14'2" x 12'10"
Master Bedroom	5.39m x 3.71m	17'8" x 12'2"
Bedroom 2	5.39m x 4.00m	17'8" x 13'1"



For more information please call **01494 685825**

shanlyhomes.com

◀ Point from which maximum dimensions are measured. Dimensions are intended for guidance only and may vary by plus or minus 7.6cm/3". The plots indicate general layout only which may vary from other plots. Kitchen and bathroom layouts indicative only. W denotes wardrobe. Please contact sales consultant for more information.

SHANLY
HOMES