

The Arc

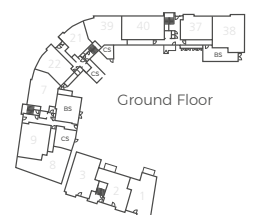
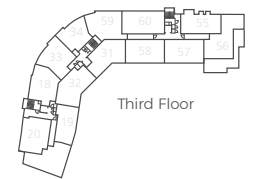
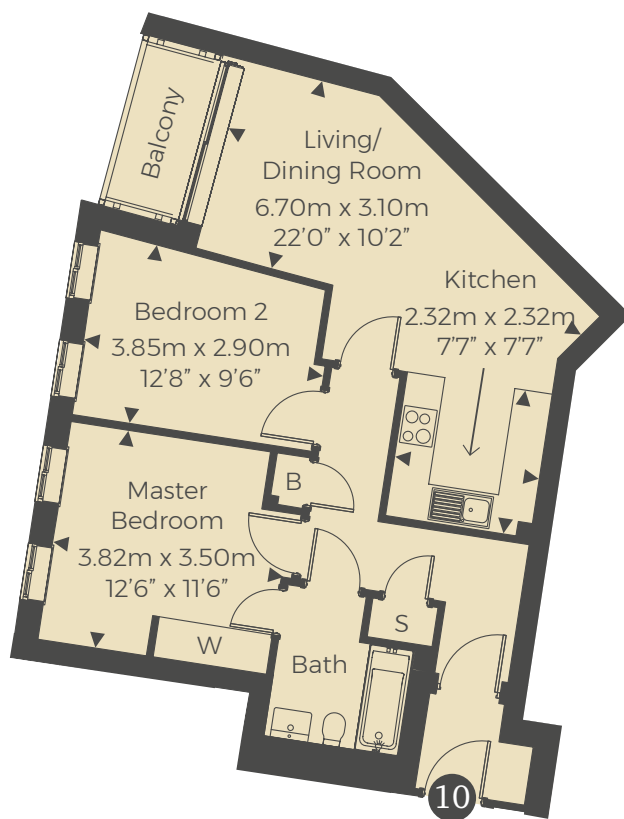
High Street | Aylesbury | HP20 1RB



This site plan is a guide for illustrative purposes only. Landscaping shown is indicative only.

No. 10

Plot 10 is a 2-bedroom apartment set over 680sq ft. This first floor apartment features open plan living space offering a living/dining area with sliding doors leading onto a balcony, a stylish kitchen with high quality AEG and Zanussi appliances and contemporary kitchen units. The master bedroom has built in wardrobes. This apartment has a separate bathroom, storage space and the addition of an external cycle store and allocated parking.



For more information please call **01494 683917**
shanlyhomes.com



◀ Point from which maximum dimensions are measured. Dimensions are intended for guidance only and may vary by plus or minus 7.6cm/3". The plots indicate general layout only which may vary from other plots. Kitchen and bathroom layouts indicative only. W denotes wardrobe. S denotes storage. E/S denotes en-suite. L denotes lift. B denotes boiler. Please contact sales consultant for more information.