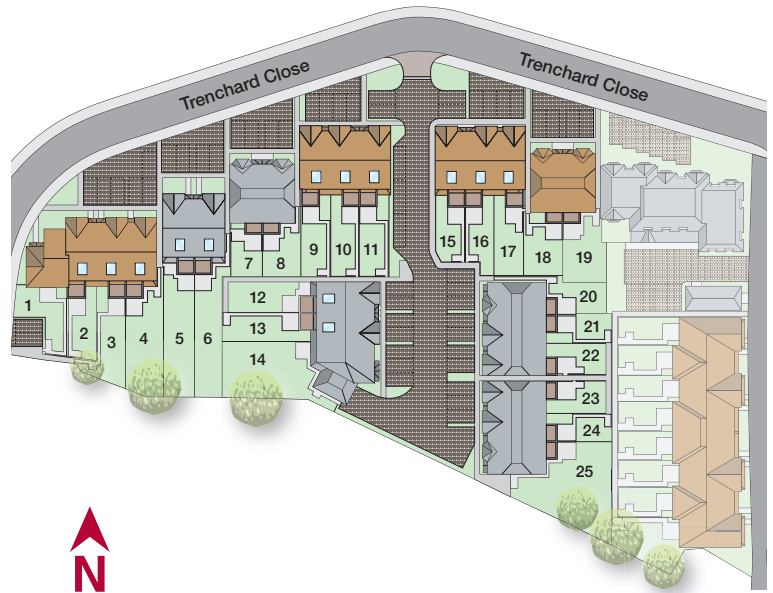


Hylton Gardens

Trenchard Close | Hersham | KT12 5JN

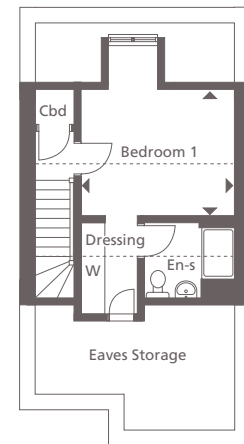
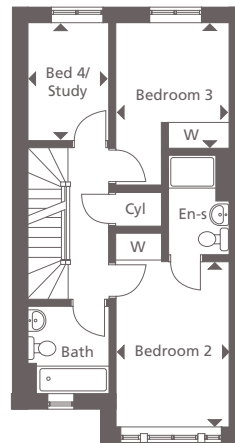
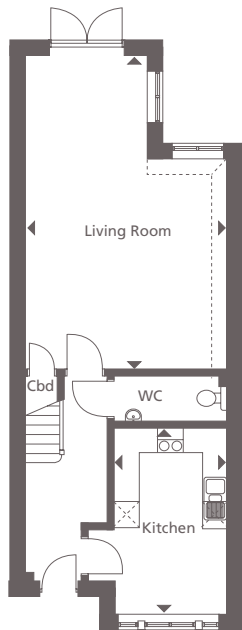


Computer generated images of plots 14, 13 and 12



Plot 13

A 4 bedroom mid terrace home. This 1368 sq ft home is built to a high specification including integrated appliances, fitted wardrobes and ceramic floor tiling to the kitchen, bathroom, en-suite's and cloakroom. This house also benefits from having an en-suite to the master and second bedroom, as well as a contemporary family bathroom. Laid over three floors these homes provide flexible living accommodation, with a spacious living/dining room and separate kitchen perfect for entertaining guests. This home offers two parking spaces.



Ground Floor

Living Room

7.44m x 4.79m 24'5" x 15'9"

Kitchen

4.45m x 2.70m 14'7" x 8'10"

First Floor

Bedroom 2

3.96m x 2.70m 13'0" x 8'10"

Bedroom 3

3.08m x 2.70m 10'2" x 8'10"

Bedroom 4/Study

2.86m x 1.97m 9'5" x 6'6"

Second Floor

Bedroom 1

3.70m x 3.01m 12'2" x 9'11"

Please note plot 13 is handed from plots shown. - - - - Denotes reduced headheight.

◀ Point from which maximum dimensions are measured. Dimensions are intended for guidance only and may vary by plus or minus 7.6cm/3". The plots shown indicate general layout which may vary slightly. Please consult a Sales Advisor for more information.

For more information please call **01372 225 007**