

Roxburgh Place

PARK FARM ROAD | BICKLEY | KENT | BR1 2PF



Roxburgh Place is a luxurious development of just four detached 5 and 6 bedroom homes and five 2 and 3 bedroom mews houses. These homes are beautifully designed in a rural setting.

The development is situated in a private, gated development accessed from Park Farm Road. Each plot offers an excellent specification throughout, with well thought out layouts to cater for a variety of living and entertaining needs. The fusion of contemporary and luxury design creates an impressive residence to call home.

This site plan is a guide for illustrative purposes only.
Landscaping shown is indicative only.



leatherhead@shanlyhomes.com

21 The Crescent, Leatherhead, Surrey KT22 8DY

01372 225007
shanlyhomes.com

SHANLY
HOMES

Plot 4, Foxwood

PARK FARM ROAD | BICKLEY | KENT | BR1 2PF

This generous 5 bedroom home offers plenty of living space. On the ground floor there is a well proportioned living room, a spacious kitchen, family breakfast room plus a dining room for formal entertaining. There is also a cloakroom and utility room with personnel door to the integral garage. On the first floor, the master bedroom features a separate dressing room and large ensuite bathroom with double basins, shower and bath. Bedroom

2 has its own en suite shower and fitted wardrobes. Bedroom 3 has fitted wardrobes, whilst bedroom 4 is directly next to the family bathroom with separate shower cubicle. The second floor provides bedroom 5, a further bathroom, study and a spacious games room offering flexible space for however you wish to use it, with an additional storage room. This impressive house totals 3272 square feet.



Ground Floor



Ground Floor

Kitchen/Family/Breakfast

9.49m x 3.75m 13'2" x 12'4"

Living Room

5.08m x 4.99m 16'8" x 16'5"

Dining Room

3.88m x 3.20m 12'9" x 10'6"

leatherhead@shanlyhomes.com

21 The Crescent, Leatherhead, Surrey KT22 8DY

01372 225007
shanlyhomes.com

SHANLY
HOMES

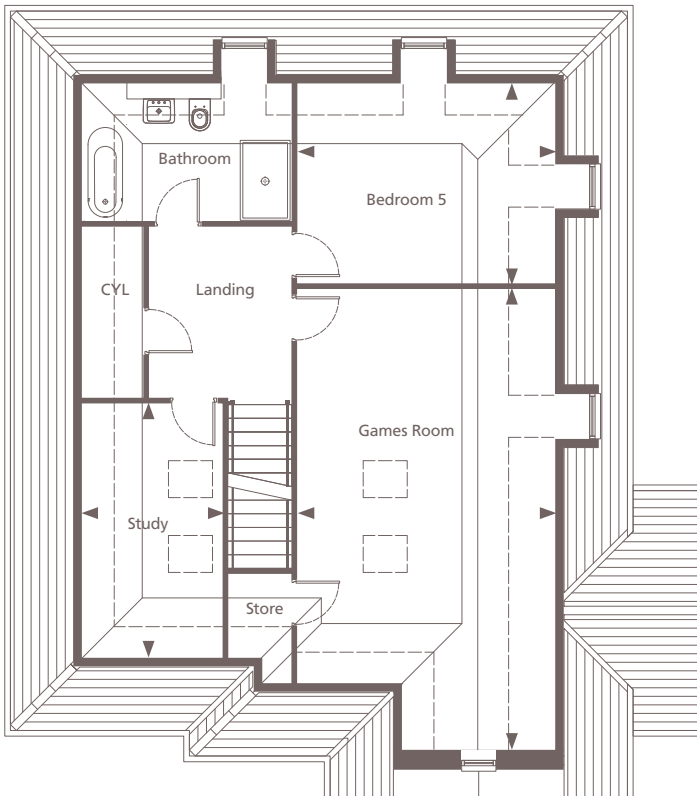
Plot 4, Foxwood

PARK FARM ROAD | BICKLEY | KENT | BR1 2PF

First Floor



Second Floor



First Floor

Master Bedroom	4.99m x 3.86m	16'5" x 12'8"
Bedroom 2	3.95m x 3.75m	13'0" x 12'4"
Bedroom 3	4.35m x 3.00m	14'4" x 9'10"
Bedroom 4	3.53m x 3.00m	11'7" x 9'10"

Second Floor

Bedroom 5	4.51m x 3.50m	14'10" x 11'6"
Study	4.46m x 2.43m	14'8" x 8'0"
Games Room	8.09m x 4.51m	26'7" x 14'10"