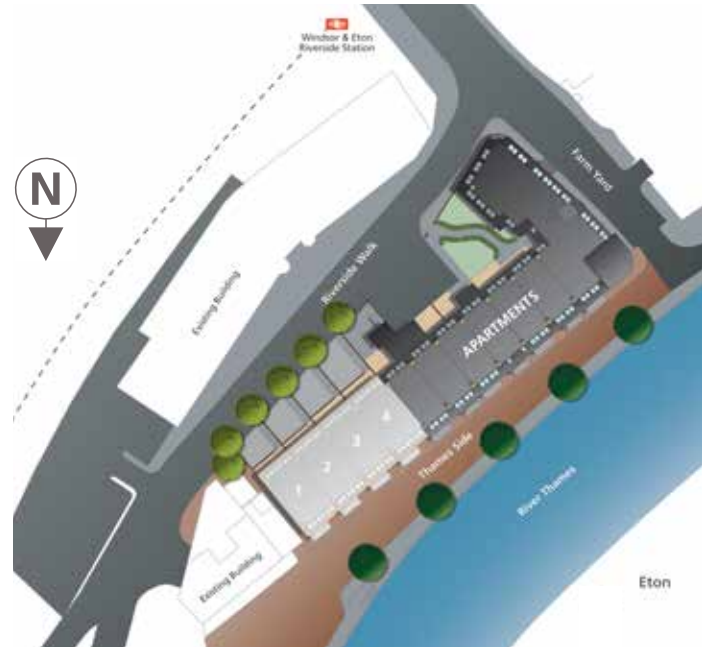


# Thameside

The Apartments | Windsor | SL4 1QN



This site plan is a guide for illustrative purposes only. Landscaping shown is indicative only.

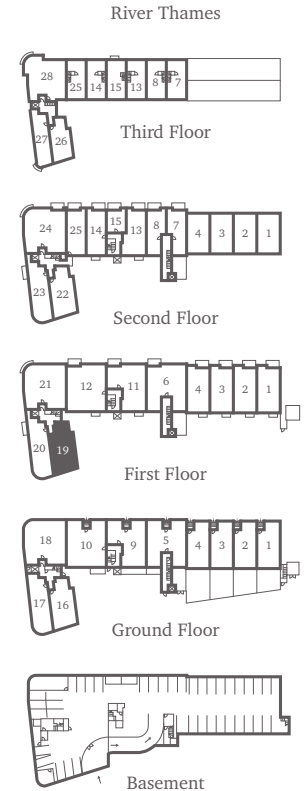
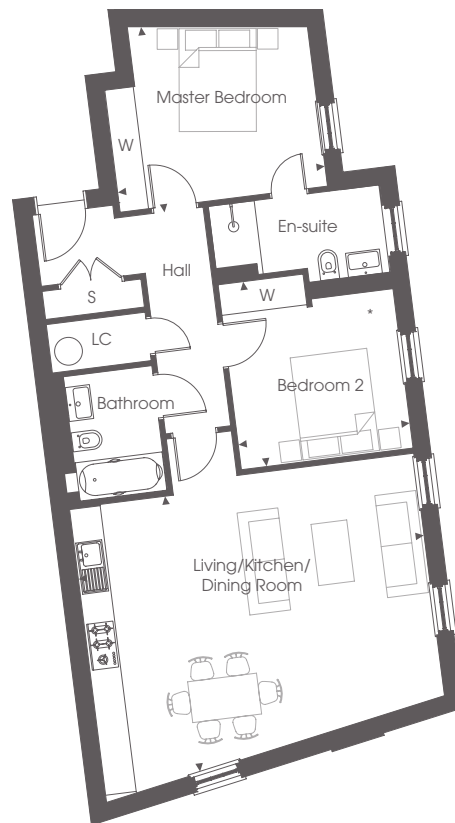
## No. 19

Plot 19 is a two bedroom apartment situated on the first floor set over 930 sq ft. The apartment consists of a generous sized open plan kitchen/living/dining area with contemporary kitchen units and integrated Miele and Siemens appliances, Villeroy and Boch sanitaryware to both the family and en-suite bathrooms. Both the master and second bedroom benefit from fitted wardrobes, with the master bedroom benefiting from a luxury en suite bathroom. This apartment is complete with a colour video entry phone system and two allocated parking spaces in gated basement.

### FIRST FLOOR

#### DIMENSIONS

Living/Kitchen/Dining Room	6.78m x 6.39m	22'3" x 21'0"
Master Bedroom	4.06m x 3.33m	13'4" x 10'11"
Bedroom 2	3.55m x 3.41m	11'11" x 11'1"



For more information please call **01494 685825**

[shanlyhomes.com](http://shanlyhomes.com)

◀ Point from which maximum dimensions are measured. Dimensions are intended for guidance only and may vary by plus or minus 7.6cm/3". The plots indicate general layout only which may vary from other plots. Kitchen and bathroom layouts indicative only. W denotes wardrobe. Please contact sales consultant for more information. \* Bedroom 2 dimensions vary slightly on plot 19.

**SHANLY**  
HOMES