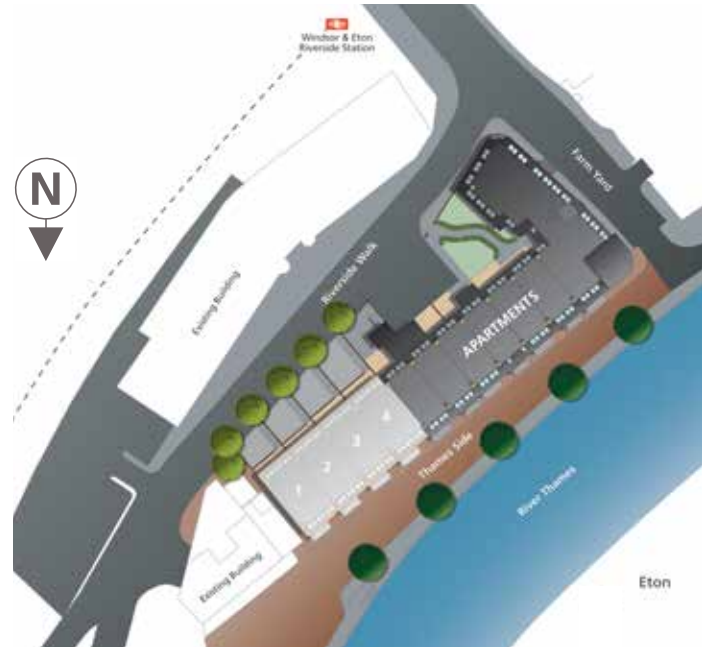


Thameside

The Apartments | Windsor | SL4 1QN



This site plan is a guide for illustrative purposes only. Landscaping shown is indicative only.

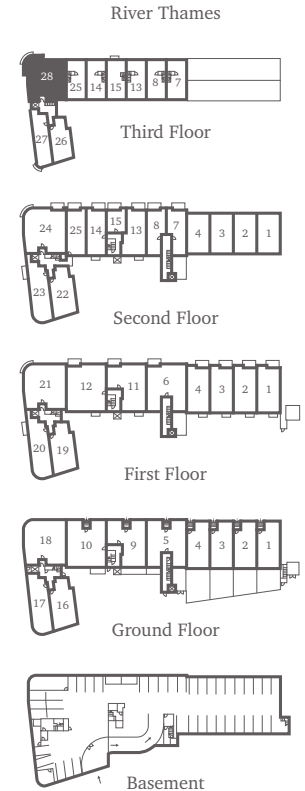
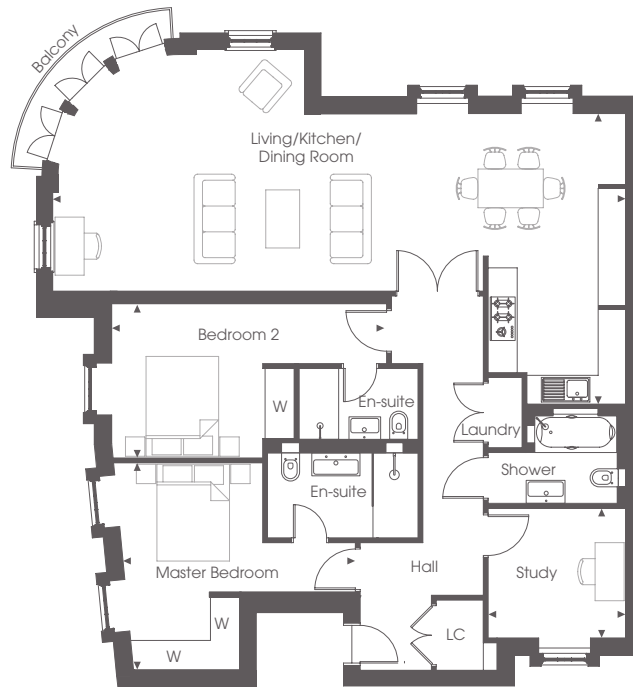
No. 28

Plot 28 is a three bedroom apartment situated on the third floor set over 1395 sq ft. The apartment consists of a generous sized open plan kitchen/living/dining area with contemporary kitchen units and integrated Miele and Siemens appliances leading onto a private balcony, Villeroy and Boch sanitaryware to both en-suite bathrooms and w/c. Both the master and second bedroom benefit from fitted wardrobes. This apartment is complete with a third bedroom/study, colour video entry phone system and two allocated parking spaces in gated basement.

THIRD FLOOR

DIMENSIONS

Living/Kitchen/Dining Room	11.84m x 6.04m	38'10" x 19'10"
Master Bedroom	4.41m x 4.31m	14'6" x 14'2"
Bedroom 2	5.27m x 3.20m	17'4" x 10'6"
Study	2.84m x 2.37m	9'4" x 7'10"



For more information please call **01494 685825**

shanlyhomes.com

◀ Point from which maximum dimensions are measured. Dimensions are intended for guidance only and may vary by plus or minus 7.6cm/3". The plots indicate general layout only which may vary from other plots. Kitchen and bathroom layouts indicative only. W denotes wardrobe. Please contact sales consultant for more information.

SHANLY
HOMES