

Nower Place

Claremount Gardens | Epsom Downs | Surrey | KT18 5XF

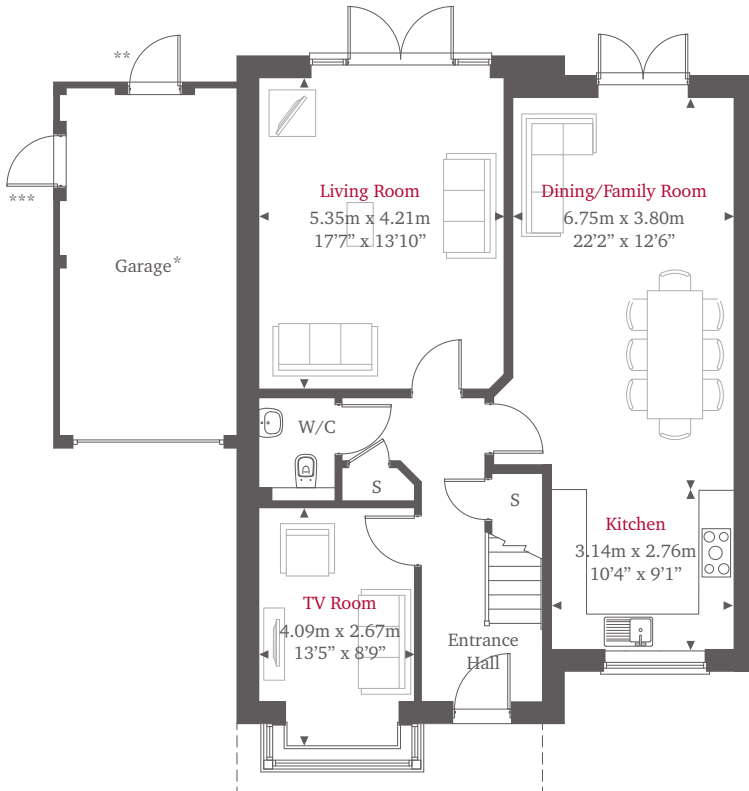


This site plan is a guide for illustrative purposes only. Landscaping shown is indicative only.

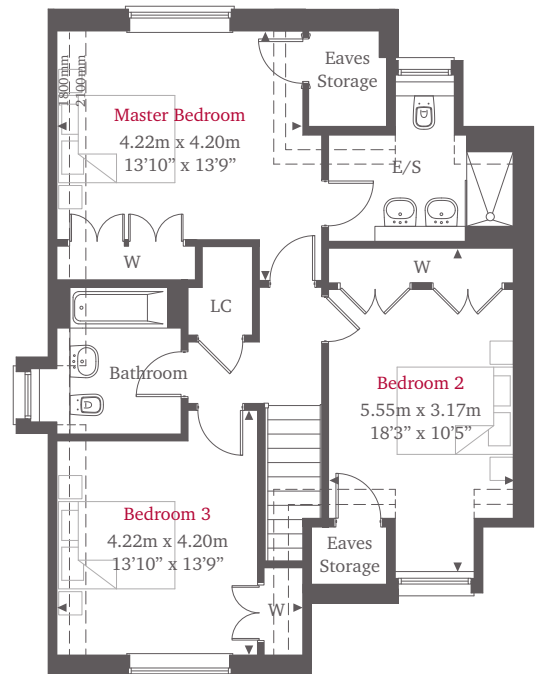
No. 7

A stunning three bedroom family home offering the utmost in family living – a brilliant and spacious open plan kitchen/dining/family room featuring a professionally designed kitchen will be the perfect setting to entertain family and friends. The first floor comes complete with an impressive master bedroom, offering fitted wardrobes and an extensive en-suite. The remaining bedrooms all feature plenty of storage, whilst the family bathroom offers a contemporary finish.

Ground Floor



First Floor



For more information please call 01372 225007

shanlyhomes.com

SHANLY
HOMES

◀ Point from which maximum dimensions are measured. Dimensions are intended for guidance only and may vary by plus or minus 7.6cm/3". The plots indicate general layout only which may vary from other plots. Kitchen and bathroom layouts indicative only. W denotes wardrobe. S denotes storage. E/S denotes en-suite. LC denotes linen cupboard. *Separate garage to no 7. **Door to no 5 garage. ***Door to nos. 4 & 8 garages. --- denotes reduced head height. Please contact sales consultant for more information.