

# Bridge House

Bridge Street | Walton-on-Thames | Surrey | KT12 1AL

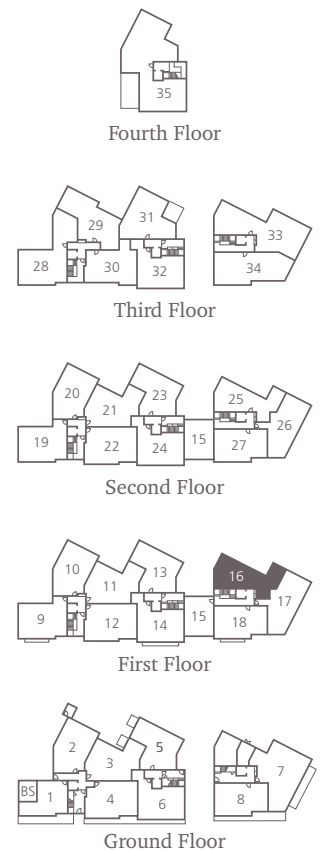
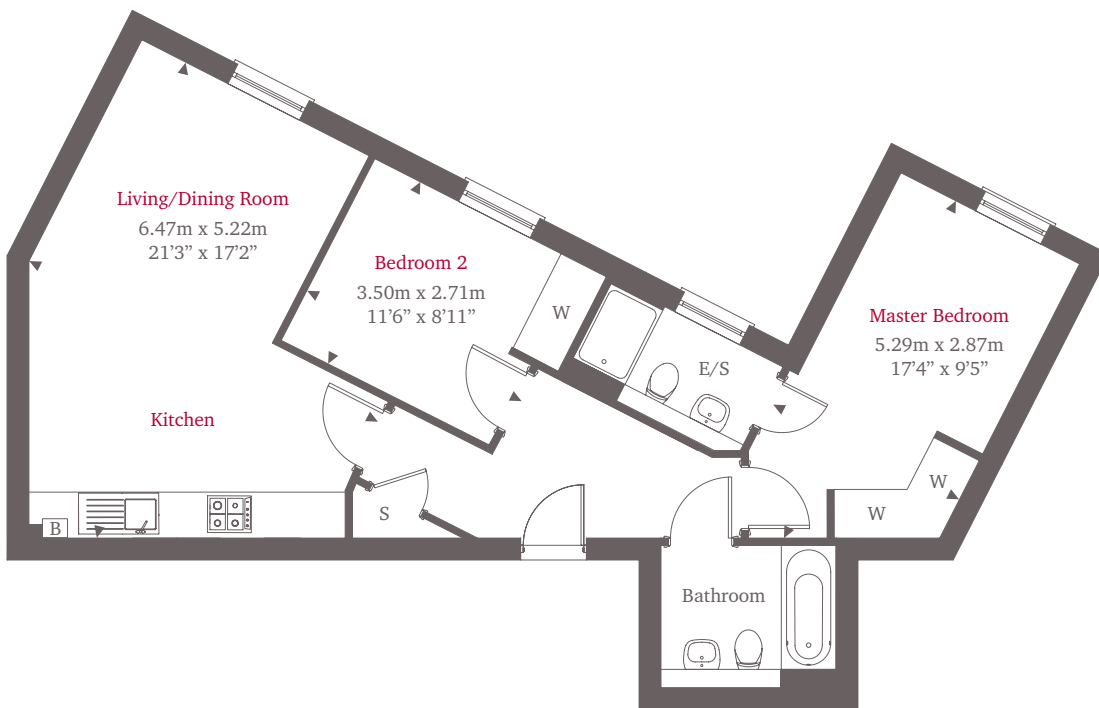


This site plan is a guide for illustrative purposes only. Landscaping shown is indicative only.

## No. 16

Plot 16 is a two bedroom apartment situated on the first floor set over 699 sq ft. The apartment consists of a modern open plan kitchen/living/dining area with contemporary kitchen units and integrated Siemens appliances. The bedrooms both benefit from fitted wardrobes whilst the master bedroom features a luxury en-suite. This apartment is completed by a family bathroom, storage space and colour video entry system.

### First Floor



For more information please call **01494 685825**  
[shanlyhomes.com](http://shanlyhomes.com)



◀ Point from which maximum dimensions are measured. Dimensions are intended for guidance only and may vary by plus or minus 7.6cm/3". The plots indicate general layout only which may vary from other plots. Kitchen and bathroom layouts indicative only. W denotes wardrobe. S denotes storage. E/S denotes en-suite. LC denotes linen cupboard. B denotes boiler. BS denotes bin storage. Please contact sales consultant for more information.