

Windsor House

Spittal Street | Marlow | Buckinghamshire | SL7 3HJ

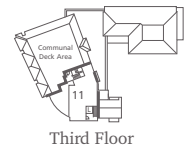
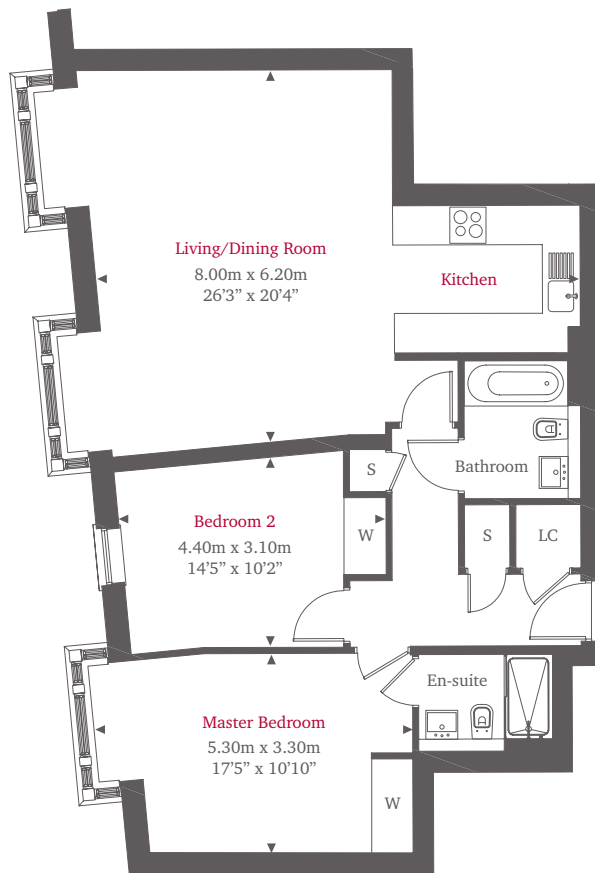


This site plan is a guide for illustrative purposes only. Landscaping shown is indicative only.

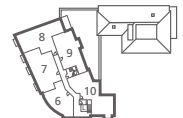
No. 2

Plot 2 is a two bedroom apartment set over 994 sq ft. Situated on the first floor, this apartment consists of a spacious open plan kitchen/living/dining area with high quality Siemens integrated appliances and contemporary kitchen units. Practical and stylish fitted wardrobes are as standard in bedrooms one and two plus a luxury ensuite adjoining bedroom one and a separate family bathroom. Includes storage space, underfloor heating, video entryphone and secure basement parking.

First Floor



Third Floor



Second Floor



First Floor



Ground Floor



Basement

For more information please call 01494 685825

shanlyhomes.com

◀ Point from which maximum dimensions are measured. Dimensions are intended for guidance only and may vary by plus or minus 7.6cm/3". The plots indicate general layout only which may vary from other plots. Kitchen and bathroom layouts indicative only. W denotes wardrobe. S denotes storage. L denotes lift. Please contact sales consultant for more information.

SHANLY
HOMES