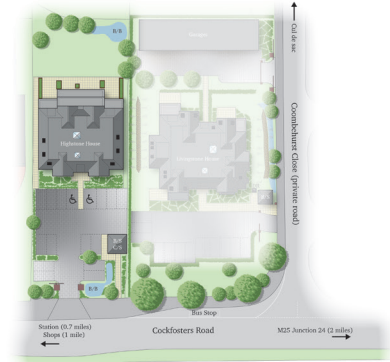


# Highstone House

Manor Wood Gate | Cockfosters Road | Hadley Wood | London | EN4 0JT

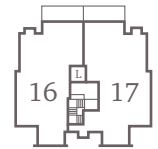
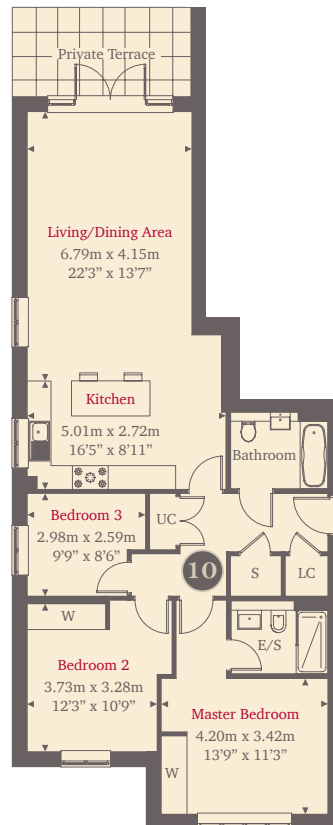


This site plan is a guide for illustrative purposes only. Landscaping shown is indicative only.

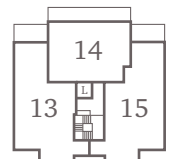
## No. 10

Plot 10 is a 3-bedroom apartment set over 1139sq ft. This ground floor apartment features a spacious living/dining room with double doors leading onto a terrace, a stylish kitchen with high quality Siemens appliances and contemporary kitchen units. The master bedroom and bedroom 2 have built in wardrobes and the master bedroom includes a luxury en-suite. This apartment has the advantage of a third bedroom/study room. Each apartment has a separate bathroom, storage space and the addition of an external cycle store and allocated parking.

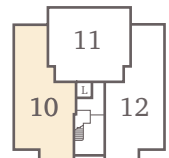
### Ground Floor



Second Floor



First Floor



Ground Floor

For more information please call 01494 683917

[shanlyhomes.com](http://shanlyhomes.com)

◀ Point from which maximum dimensions are measured. Dimensions are intended for guidance only and may vary by plus or minus 7.6cm/3". The plots indicate general layout only which may vary from other plots. Kitchen and bathroom layouts indicative only. W denotes wardrobe. S denotes storage. E/S denotes en-suite. LC denotes linen cupboard. Please contact sales consultant for more information. UC denotes utility cupboard.

**SHANLY**  
HOMES