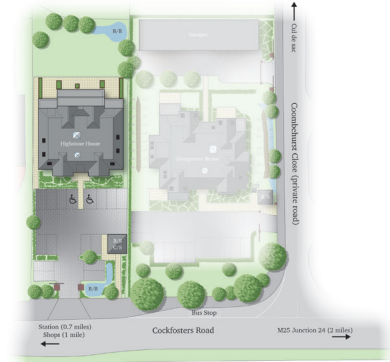


Highstone House

Manor Wood Gate | Cockfosters Road | Hadley Wood | London | EN4 0JT

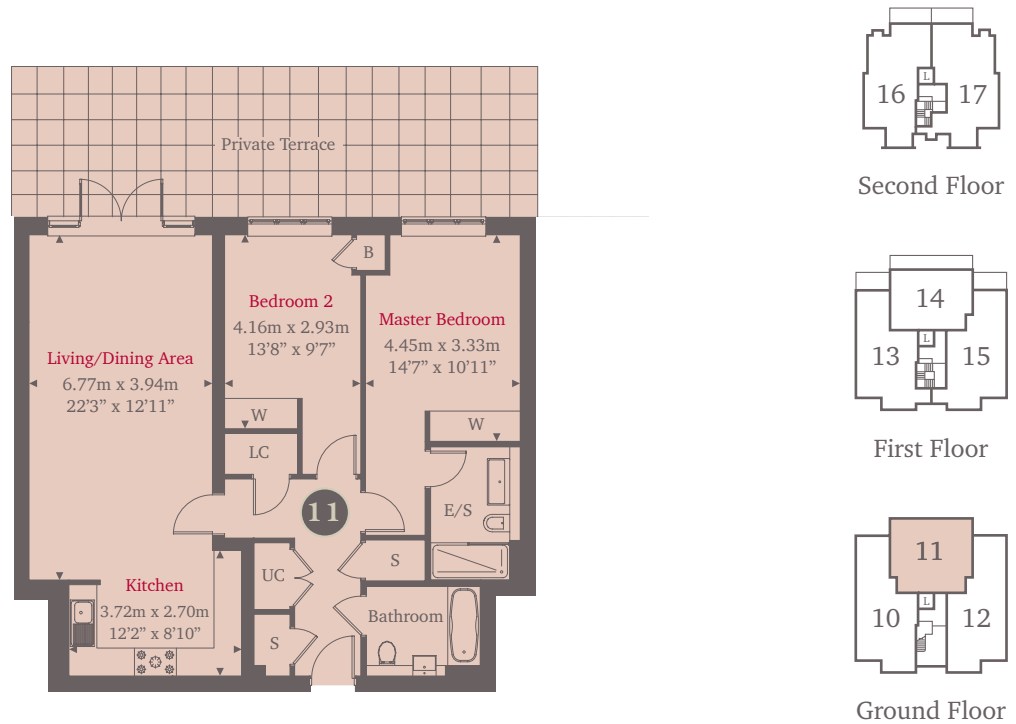


This site plan is a guide for illustrative purposes only. Landscaping shown is indicative only.

No. 11

Plot 11 is a 2-bedroom apartment set over 1048sq ft. This ground floor apartment features a spacious living/dining room with double doors leading onto a terrace, a stylish kitchen with high quality Siemens appliances and contemporary kitchen units. The two double bedrooms have built in wardrobes and the master bedroom includes a luxury en-suite. Each apartment has a separate bathroom, storage space and the addition of off an external cycle store and allocated parking.

Ground Floor



For more information please call **01494 683917**
shanlyhomes.com



◀ Point from which maximum dimensions are measured. Dimensions are intended for guidance only and may vary by plus or minus 7.6cm/3". The plots indicate general layout only which may vary from other plots. Kitchen and bathroom layouts indicative only. W denotes wardrobe. S denotes storage. E/S denotes en-suite. LC denotes linen cupboard. UC denotes utility cupboard.