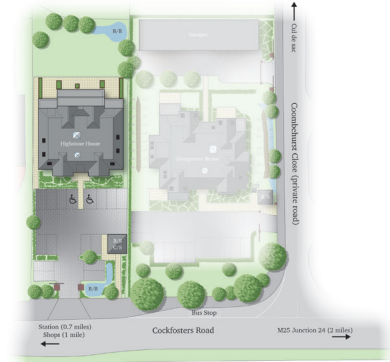


Highstone House

Manor Wood Gate | Cockfosters Road | Hadley Wood | London | EN4 0JT

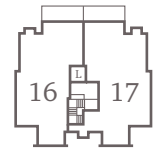
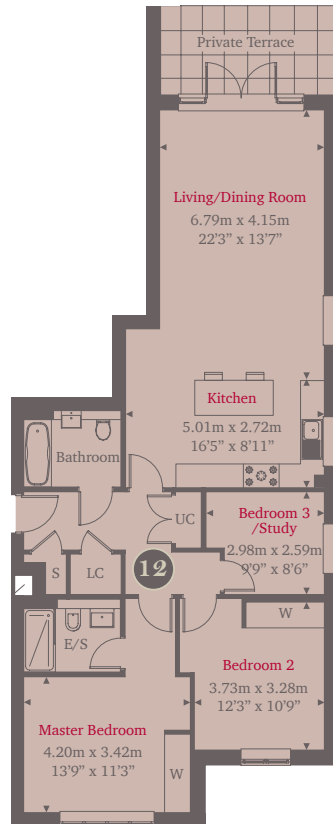


This site plan is a guide for illustrative purposes only. Landscaping shown is indicative only.

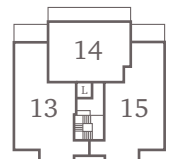
No. 12

Plot 12 is a 3-bedroom apartment set over 1139sq ft. This ground floor apartment features a spacious living/dining room with double doors leading onto a terrace, a stylish kitchen with high quality Siemens appliances and contemporary kitchen units. The master bedroom and bedroom 2 have built in wardrobes and the master bedroom includes a luxury en-suite. This apartment has the advantage of a third bedroom/study room. Each apartment has a separate bathroom, storage space and the addition of an external cycle store and allocated parking.

Ground Floor



Second Floor



First Floor



Ground Floor

For more information please call 01494 683917

shanlyhomes.com

◀ Point from which maximum dimensions are measured. Dimensions are intended for guidance only and may vary by plus or minus 7.6cm/3". The plots indicate general layout only which may vary from other plots. Kitchen and bathroom layouts indicative only. W denotes wardrobe. S denotes storage. E/S denotes en-suite. LC denotes linen cupboard. Please contact sales consultant for more information. UC denotes utility cupboard.

SHANLY
HOMES