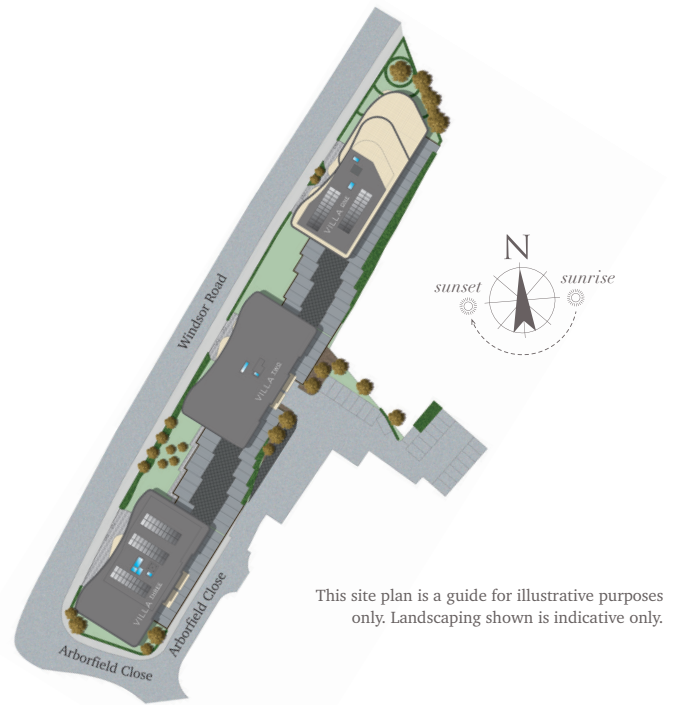


# Trinity

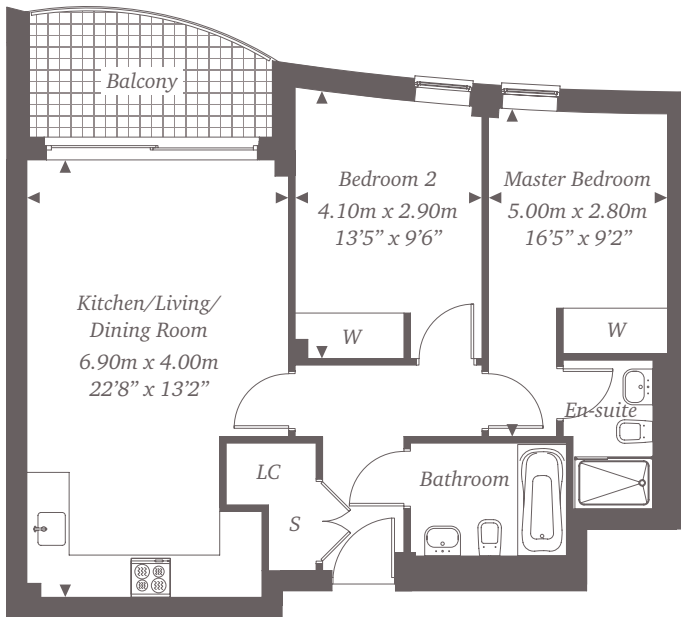
Windsor Road | Slough | Berkshire | SL1 2JN



This site plan is a guide for illustrative purposes only. Landscaping shown is indicative only.

## Villa 3 No. 16h

Plot 16 is a two bedroom apartment set over 733 sq ft. Situated on the second floor, this apartment consists of a spacious open plan kitchen/living/dining area with balcony which includes AEG integrated appliances and quality contemporary kitchen units. Practical and stylish fitted wardrobes are as standard in bedrooms one and two plus a luxury en suite bathroom adjoining bedroom one and a separate family bathroom. Includes storage space, audio entryphone system and dedicated parking space.



Fifth Floor



Forth Floor



Third Floor



Second Floor



First Floor



Ground Floor

For more information please call 01494 685825

[shanlyhomes.com](http://shanlyhomes.com)

◀ Point from which maximum dimensions are measured. Dimensions are intended for guidance only and may vary by plus or minus 7.6cm/3". The plots indicate general layout only which may vary from other plots. LC denotes linen cupboard. S denotes storage. W denotes wardrobe. Please contact sales consultant for more information.

**SHANLY**  
HOMES