

The Arc

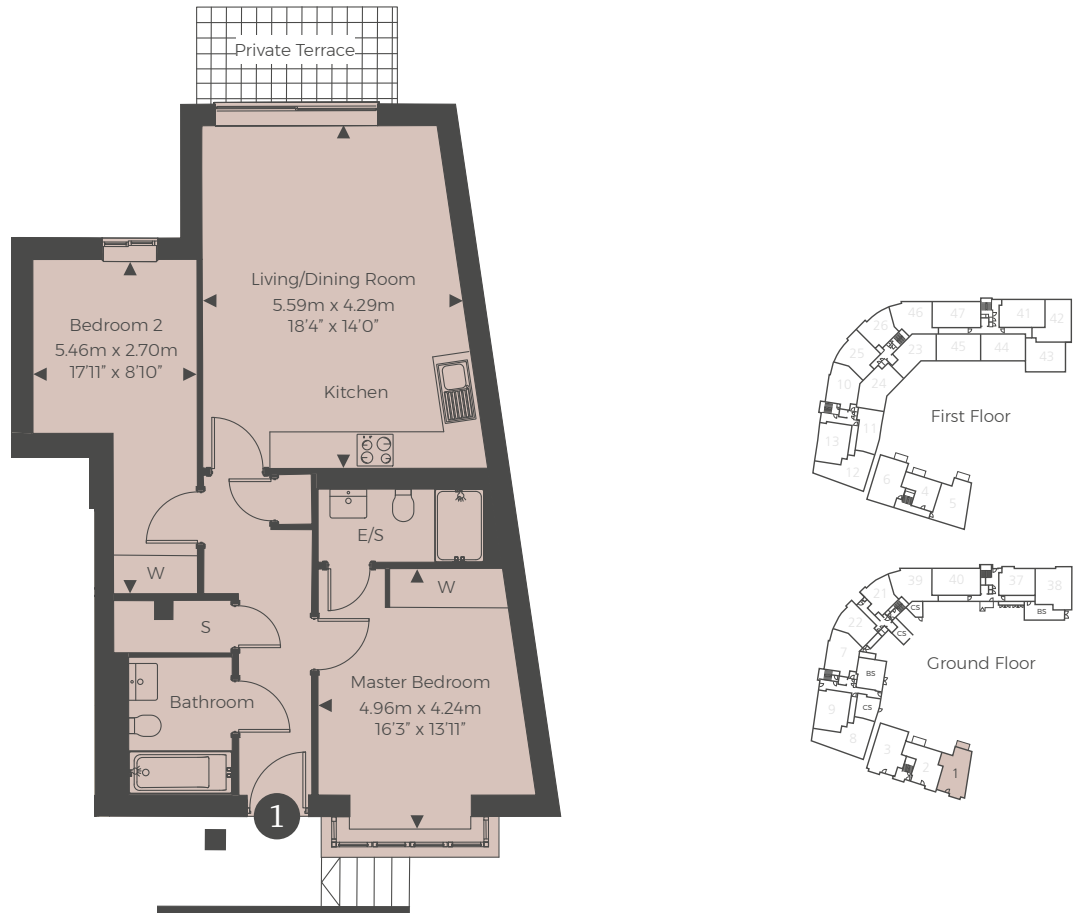
High Street | Aylesbury | HP20 1RB



This site plan is a guide for illustrative purposes only. Landscaping shown is indicative only.

No. 1

Plot 1 is a 2-bedroom apartment set over 736sq ft. This ground floor apartment features open plan living space offering a living/dining area with sliding doors leading onto a terrace, a stylish kitchen with high quality AEG and Zanussi appliances and contemporary kitchen units. The two bedrooms have built in wardrobes and the master bedroom includes a luxury en-suite. Each apartment has a separate bathroom, storage space and the addition of an external cycle store and allocated parking.



For more information please call **01494 683917**
shanlyhomes.com



◀ Point from which maximum dimensions are measured. Dimensions are intended for guidance only and may vary by plus or minus 7.6cm/3". The plots indicate general layout only which may vary from other plots. Kitchen and bathroom layouts indicative only. W denotes wardrobe. S denotes storage. E/S denotes en-suite. Please contact sales consultant for more information.