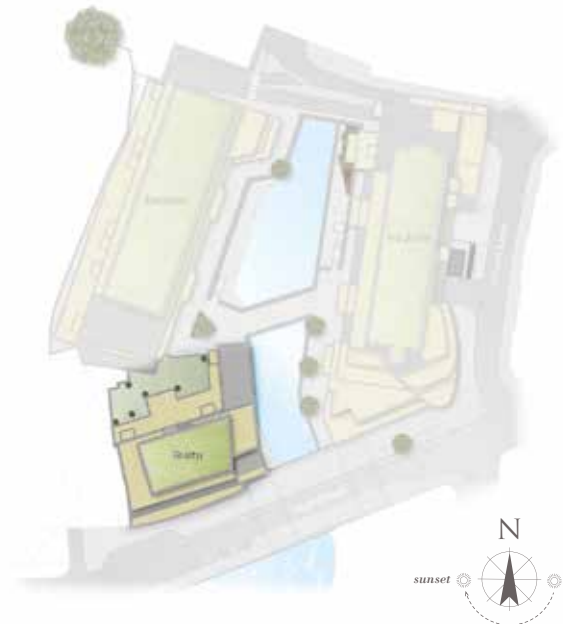


Waterside Quarter

Crown lane | Maidenhead | Berkshire | SL6 1QR



This site plan is a guide for illustrative purposes only. Landscaping shown is indicative only.

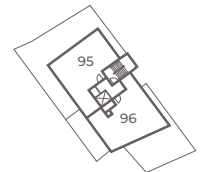
APARTMENT 81

Apartment 81 is a two bedroom apartment set over 911 sq ft. Situated on the first floor, this apartment features a professionally designed kitchen with integrated appliances which opens onto an open plan living / dining area. This apartment has a set of double doors that lead out onto a large private terrace. Both bedrooms offer fitted wardrobes and the master bedroom features an en-suite shower room.

Kitchen/Living/Dining Room
8.40m x 4.50m 27'6" x 14'9"

Master Bedroom
4.50m x 3.00m 14'9" x 9'10"

Bedroom 2
4.50m x 3.00m 14'9" x 9'10"



Third Floor



Second Floor



First Floor

For more information please call 01 628 673046
shanlyhomes.com

SHANLY
HOMES

◀ Point from which maximum dimensions are measured. Dimensions are intended for guidance only and may vary by plus or minus 7.6cm/3". The plots indicate general layout only which may vary from other plots. Kitchen and bathroom layouts indicative only. W denotes wardrobe. S denotes storage. LC denotes linen cupboard. Please contact sales consultant for more information.