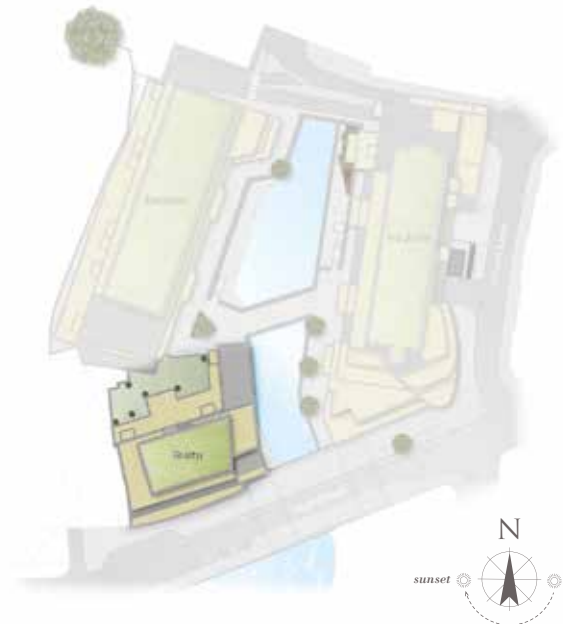


# Waterside Quarter

Crown lane | Maidenhead | Berkshire | SL6 1QR



This site plan is a guide for illustrative purposes only. Landscaping shown is indicative only.

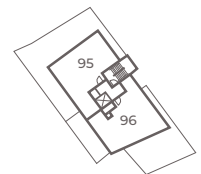
## APARTMENT 88

Apartment 88 is a two bedroom apartment set over 755 sq ft. Situated on the first floor, this apartment features a professionally designed kitchen with integrated appliances which opens onto an open plan living / dining area with double doors that lead out onto a large private terrace. Both bedrooms offer fitted wardrobes and the master bedroom features an en-suite shower room.

**Kitchen/Living/Dining Room**  
8.40m x 4.20m 27'6" x 13'9"

**Master Bedroom**  
4.60m x 2.90m 15'1" x 9'6"

**Bedroom 2**  
4.60m x 2.80m 15'1" x 9'2"



Third Floor



Second Floor



First Floor

For more information please call 01 628 673046  
shanlyhomes.com

**SHANLY**  
HOMES

Point from which maximum dimensions are measured. Dimensions are intended for guidance only and may vary by plus or minus 7.6cm/3". The plots indicate general layout only which may vary from other plots. Kitchen and bathroom layouts indicative only. W denotes wardrobe. S denotes storage. LC denotes linen cupboard. Please contact sales consultant for more information.