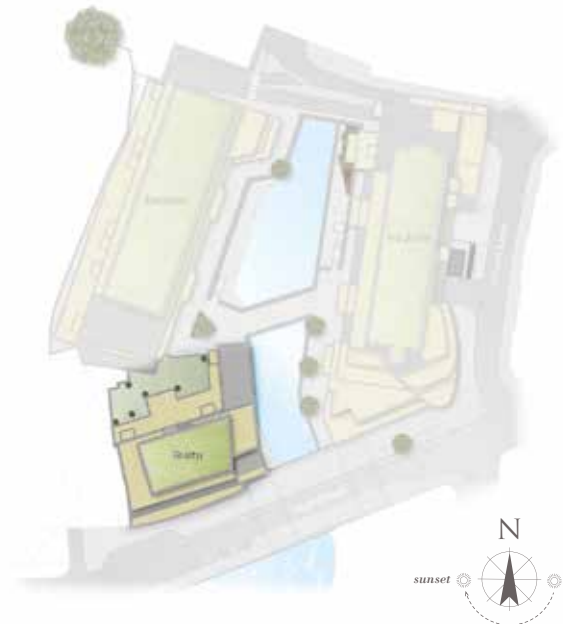


Waterside Quarter

Crown lane | Maidenhead | Berkshire | SL6 1QR



This site plan is a guide for illustrative purposes only. Landscaping shown is indicative only.

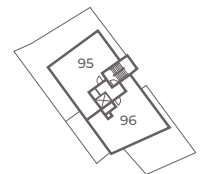
APARTMENT 84

Apartment 84 is a two bedroom apartment set over 758 sq ft. Situated on the on the first floor, this apartment features a professionally designed kitchen with integrated appliances which opens into an open plan living / dining area. Both bedrooms offer fitted wardrobes and the master bedroom features an en-suite shower room.

Kitchen/Living/Dining Room
9.00m x 7.30m 29'6" x 23'11"

Master Bedroom
5.30m x 3.20m 17'5" x 10'5"

Bedroom 2
3.80m x 2.80m 12'5" x 9'2"



Third Floor



Second Floor



First Floor

For more information please call 01 628 673046
shanlyhomes.com

SHANLY
HOMES

◀ Point from which maximum dimensions are measured. Dimensions are intended for guidance only and may vary by plus or minus 7.6cm/3". The plots indicate general layout only which may vary from other plots. Kitchen and bathroom layouts indicative only. W denotes wardrobe. S denotes storage. LC denotes linen cupboard. Please contact sales consultant for more information.