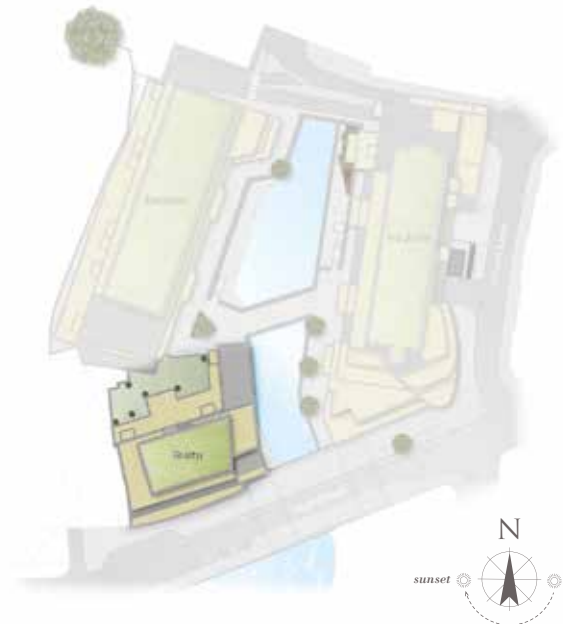


Waterside Quarter

Crown lane | Maidenhead | Berkshire | SL6 1QR



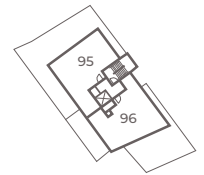
This site plan is a guide for illustrative purposes only. Landscaping shown is indicative only.

APARTMENT 83

Apartment 83 is a one bedroom apartment set over 545 sq ft. Situated on the first floor, this apartment features a professionally designed kitchen with integrated appliances which opens onto an open plan living / dining area. The bedroom offers a fitted wardrobe with ample storage throughout the home.

Kitchen/Living/Dining Room
7.60m x 3.60m 24'11" x 11'9"

Bedroom
5.00m x 3.10m 16'4" x 10'2"



Third Floor



Second Floor



First Floor

For more information please call 01 628 673046
shanlyhomes.com

SHANLY
HOMES

◀ Point from which maximum dimensions are measured. Dimensions are intended for guidance only and may vary by plus or minus 7.6cm/3". The plots indicate general layout only which may vary from other plots. Kitchen and bathroom layouts indicative only. W denotes wardrobe. S denotes storage. LC denotes linen cupboard. Please contact sales consultant for more information.