

Amber Lodge

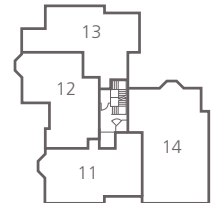
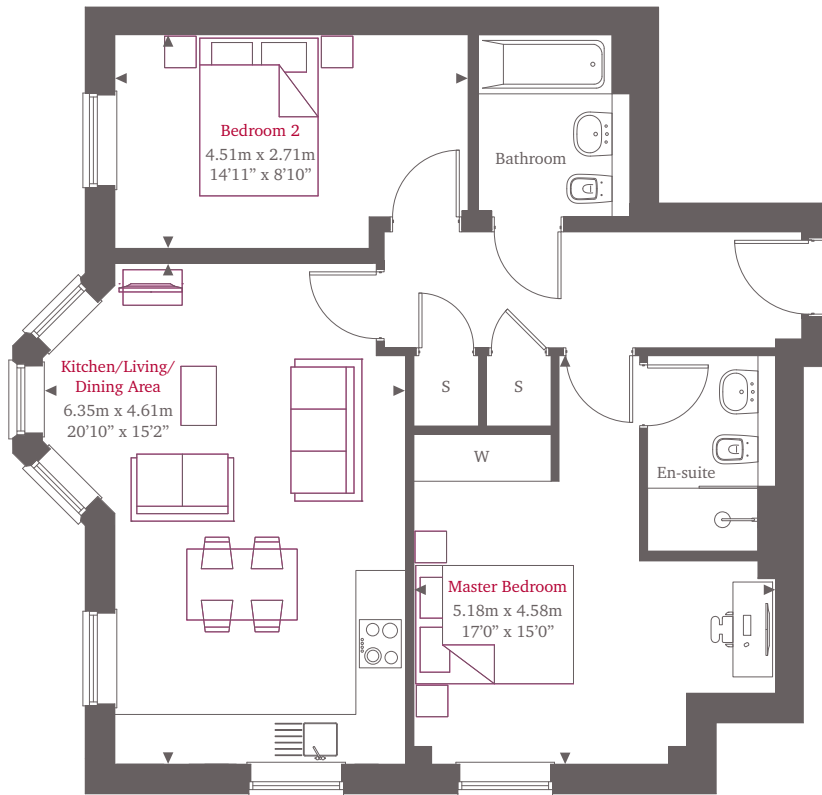
Croft Road | Godalming | Surrey | GU7 1BG



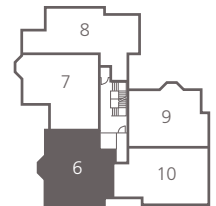
This site plan is a guide for illustrative purposes only. Landscaping shown is indicative only.

Number 6

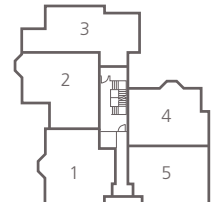
Number 6 is a stylish first floor two bedroom apartment featuring a contemporary open-plan kitchen/living/dining area with integrated appliances. This home also benefits from two spacious bedrooms with the master bedroom boasting an en-suite and built-in wardrobe.



Second Floor



First Floor



Ground Floor

For more information please call **01372 225007**

shanlyhomes.com

◀ Point from which maximum dimensions are measured. Dimensions are intended for guidance only and may vary by plus or minus 7.6cm/3". The plot indicate general layout only which may vary from other plots. Kitchen and bathroom layouts indicative only. E/S denotes en-suite. W denotes wardrobe. S denotes storage. Please contact sales consultant for more information.

SHANLY
HOMES