

Amber Lodge

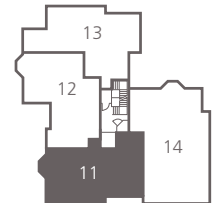
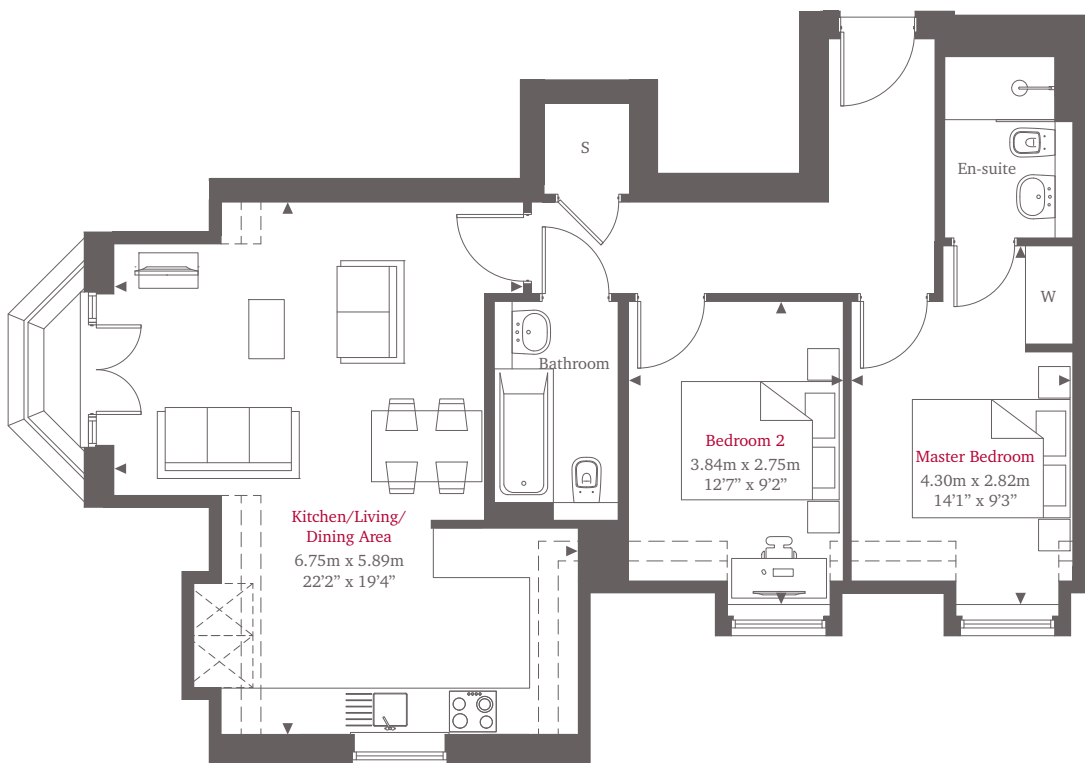
Croft Road | Godalming | Surrey | GU7 1BG



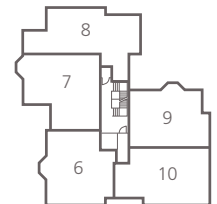
This site plan is a guide for illustrative purposes only. Landscaping shown is indicative only.

Number 11

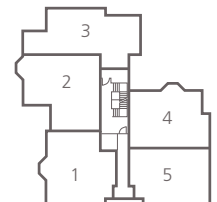
Number 11 is a stunning second floor two bedroom apartment featuring a marvellous living area with patio doors opening out onto a private balcony and a contemporary kitchen with integrated appliances. This home also boasts a spacious master bedroom with built-in wardrobe and en-suite shower room.



Second Floor



First Floor



Ground Floor

For more information please call **01372 225007**

shanlyhomes.com

◀ Point from which maximum dimensions are measured. Dimensions are intended for guidance only and may vary by plus or minus 7.6cm/3". The plot indicate general layout only which may vary from other plots. Kitchen and bathroom layouts indicative only. E/S denotes en-suite. W denotes wardrobe. S denotes storage. Please contact sales consultant for more information.

