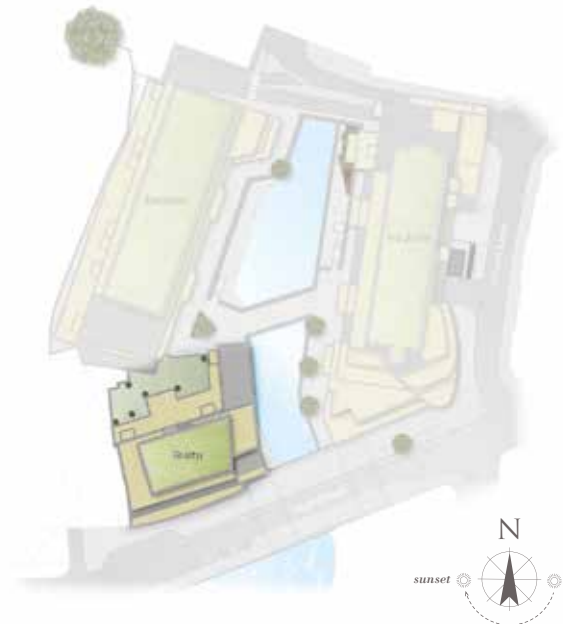


Waterside Quarter

Crown lane | Maidenhead | Berkshire | SL6 1QR



This site plan is a guide for illustrative purposes only. Landscaping shown is indicative only.

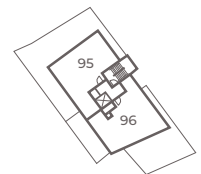
APARTMENT 93

Apartment 93 is a two bedroom apartment set over 800 sq ft. Situated on the second floor, this apartment features a professionally designed kitchen with integrated appliances which opens onto an open plan living / dining area with double doors that lead out onto a private balcony. Both bedrooms offer fitted wardrobes and the master bedroom features a Juliet balcony and an en-suite shower room.

Kitchen/Living/Dining Room
6.30m x 4.30m 20'8" x 14'1"

Master Bedroom
3.80m x 2.80m 12'5" x 9'2"

Bedroom 2
3.60m x 2.80m 11'9" x 9'2"



Third Floor



Second Floor



First Floor

For more information please call 01628 673046
shanlyhomes.com

SHANLY
HOMES

◀ Point from which maximum dimensions are measured. Dimensions are intended for guidance only and may vary by plus or minus 7.6cm/3". The plots indicate general layout only which may vary from other plots. Kitchen and bathroom layouts indicative only. W denotes wardrobe. S denotes storage. LC denotes linen cupboard. Please contact sales consultant for more information. *Entrance on first floor.