

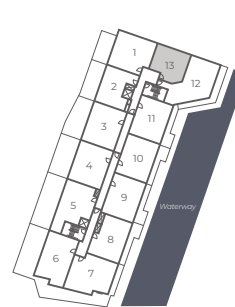
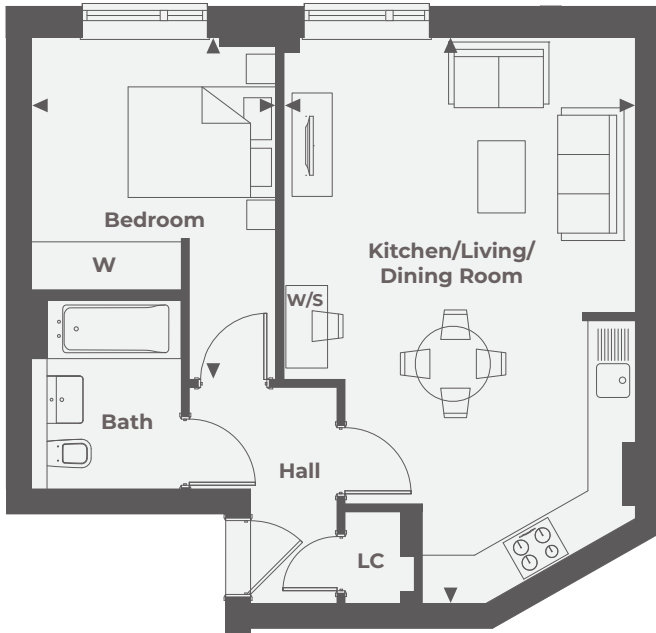
Waterside Quarter

Crown lane | Maidenhead | Berkshire | SL6 1QR

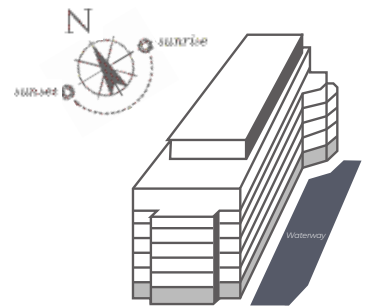


APARTMENT 13

A one bedroom apartment set over 536 sq ft, situated on the first floor, featuring a professionally designed kitchen with integrated appliances, an open plan living/ dining area and a space for home working. The bedroom offers fitted wardrobes. This home is complete with a stylish bathroom and additional storage.



First Floor



Floor locator

Kitchen/Living/Dining Room
7.17m x 4.45m 23'6" x 14'7"

Bedroom
4.33m x 3.10m 14'2" x 10'2"

For more information please call 01 628 673046
shanlyhomes.com



◀ Point from which maximum dimensions are measured. Dimensions are intended for guidance only and may vary by plus or minus 7.6cm/3". The plots indicate general layout only which may vary from other plots. Kitchen and bathroom layouts indicative only. E/S denotes en-suite. W denotes wardrobe. S denotes storage. LC denotes linen cupboard. W/S denotes workstation. Please contact sales consultant for more information.