

Tall Trees

Uplands Park Road | Enfield | EN2 7PU



UPLANDS
PARK PLACE

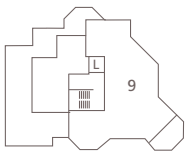
ENFIELD



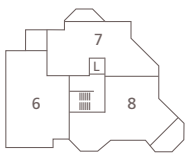
This site plan is a guide for illustrative purposes only. Landscaping shown is indicative only.

No. 5

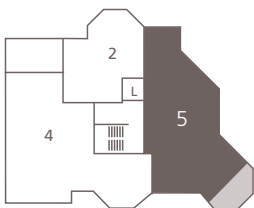
Tall Trees is a two bedroom apartment set over 92.71 sq m/ 998 sq ft. Situated on the first floor, this apartment features a fully fitted Shaker kitchen with a spacious open plan living space and feature windows. Double doors lead out onto a covered balcony. The master bedroom benefits from an en-suite bathroom and fitted wardrobe. Bedroom two is a good-sized double with a built-in wardrobe. Outside, the apartment includes its own allocated off-street parking space.



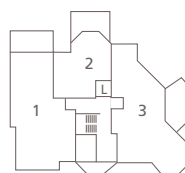
Third Floor



Second Floor



First Floor



Ground Floor



Kitchen/Living/
Dining Area

8.52m x 8.51m

27'11" x 27'11"

Master Bedroom

5.51m x 4.40m

18'1" x 14'5"

Bedroom 2

4.0m x 3.79m

13'1" x 12'5"

For more information please call 0203 813 4948

shanlyhomes.com

SHANLY
HOMES

◀ Point from which maximum dimensions are measured. Dimensions are intended for guidance only and may vary by plus or minus 7.6cm/3". The plots indicate general layout only which may vary from other plots. Kitchen and bathroom layouts indicative only. W denotes wardrobe. S denotes storage. LC denotes linen cupboard. W/S denotes workstation. L denotes lift. Please contact sales consultant for more information.