

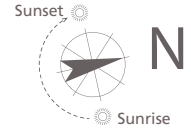
The Firs

Uplands Park Road | Enfield | EN2 7PU



UPLANDS
PARK PLACE

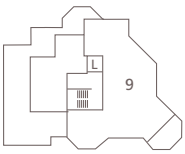
ENFIELD



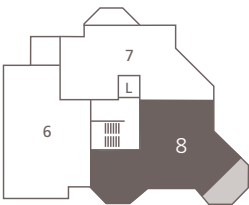
This site plan is a guide for illustrative purposes only. Landscaping shown is indicative only.

No. 8

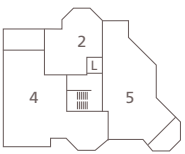
The Firs is a two bedroom apartment set over 82.03 sq m/ 883 sq ft. Situated on the second floor, it includes a stylish open plan fully fitted kitchen and living/ dining area with double doors leading out onto a covered balcony. The bright master bedroom benefits from feature windows, an en-suite bathroom and fitted wardrobe. Bedroom two is a good-sized double with a built-in wardrobe. Outside, the apartment includes its own allocated off-street parking space and electric car charging point.



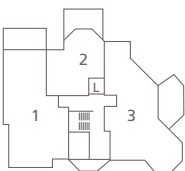
Third Floor



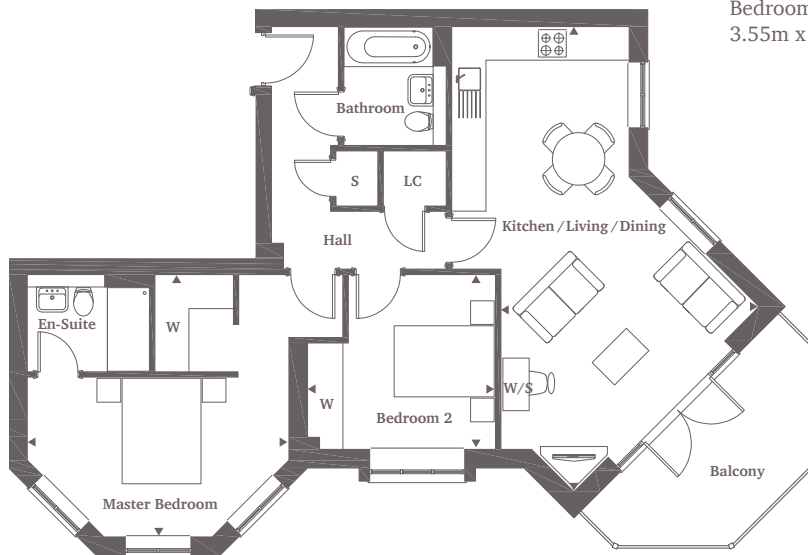
Second Floor



First Floor



Ground Floor



Kitchen/Living/
Dining Area

8.78m x 4.87m

28'10" x 16'0"

Master Bedroom

4.95m x 4.91m

16'3" x 16'1"

Bedroom 2

3.55m x 3.30m

11'8" x 10'10"

For more information please call 0203 813 4948

shanlyhomes.com

SHANLY
HOMES

◀ Point from which maximum dimensions are measured. Dimensions are intended for guidance only and may vary by plus or minus 7.6cm/3". The plots indicate general layout only which may vary from other plots. Kitchen and bathroom layouts indicative only. W denotes wardrobe. S denotes storage. LC denotes linen cupboard. W/S denotes workstation. L denotes lift. Please contact sales consultant for more information.