

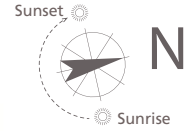
The Buckingham

Uplands Park Road | Enfield | EN2 7PU



UPLANDS
PARK PLACE

ENFIELD



This site plan is a guide for illustrative purposes only. Landscaping shown is indicative only.

No. 9

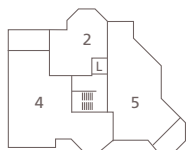
The Buckingham is a superior three bedroom apartment set over 114.953 sq m/ 1237 sq ft. Occupying the whole third floor, this grand home features a fully fitted Shaker kitchen and a spacious open plan living space with double doors leading onto a large south facing roof top terrace. The master bedroom benefits from an en-suite bathroom, fitted wardrobe and double doors leading to its own balcony. Bedroom two is a good-sized double with feature windows and a built-in wardrobe. Bedroom three provides the option of a home-work study. Outside, the apartment includes its own allocated off-street parking space and electric car charging point.



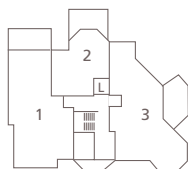
Third Floor



Second Floor



First Floor



Ground Floor



- Kitchen/Living/
Dining Area
9.17m x 7.2m 30'1" x 23'7"
- Master Bedroom
7.02m x 5.56m 23'0" x 18'3"
- Bedroom 2
4.95m x 4.91m 16'3" x 16'1"
- Bedroom 3
4.22m x 2.84m 13'10" x 9'4"

For more information please call 0203 813 4948

shanlyhomes.com

SHANLY
HOMES

◀ Point from which maximum dimensions are measured. Dimensions are intended for guidance only and may vary by plus or minus 7.6cm/3". The plots indicate general layout only which may vary from other plots. Kitchen and bathroom layouts indicative only. W denotes wardrobe. S denotes storage. LC denotes linen cupboard. W/S denotes workstation. L denotes lift. Please contact sales consultant for more information.