

No. 2(h) Weyside Grove

Potters Lane | Send | GU23 7AJ



WEYSIDE GROVE

SEND

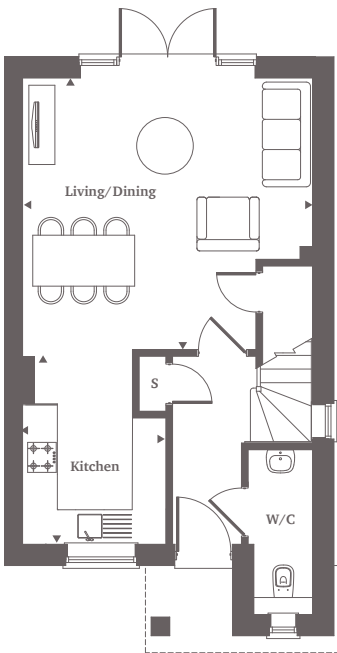


Computer-generated image of Plots 1-3, Weyside Grove.

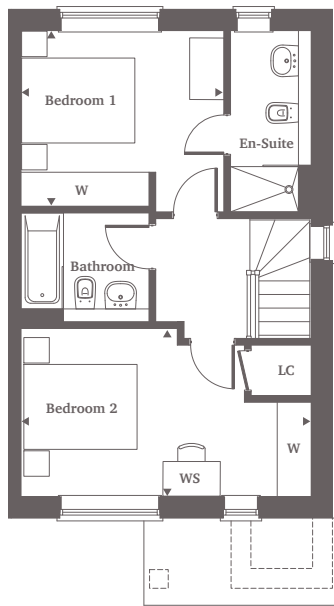


This site plan is a guide for illustrative purposes only. Landscaping shown is indicative only.

No. 2 is a highly specified two bedroom middle terrace house. Downstairs boasts a spacious open plan kitchen/ living space with French doors leading out onto the private garden. Upstairs there are two good sized bedrooms with built in wardrobes, with bedroom one benefiting from an en-suite and bedroom two a work station space.



Ground Floor



First Floor

Ground Floor

Living/Dining	5.12m x 4.80m	16'7" x 16'1"
Kitchen	3.34m x 2.53m	10'9" x 8'3"

First Floor

Bedroom 1	3.58m x 3.10m	11'7" x 10'1"
Bedroom 2	5.12m x 2.95m	16'7" x 9'8"

For more information please call 01372 225 007
shanlyhomes.com



◀ Point from which maximum dimensions are measured. Dimensions are intended for guidance only and may vary by plus or minus 7.6cm/3". The plots indicate general layout only which may vary from other plots. Kitchen and bathroom layouts indicative only. W denotes wardrobe. S denotes storage. LC denotes linen cupboard. WS denotes work space. (h) denotes handed plot layout. Please contact sales consultant for more information.