

No. 4 Weyside Grove

Potters Lane | Send | GU23 7AJ



WEYSIDE GROVE

SEND

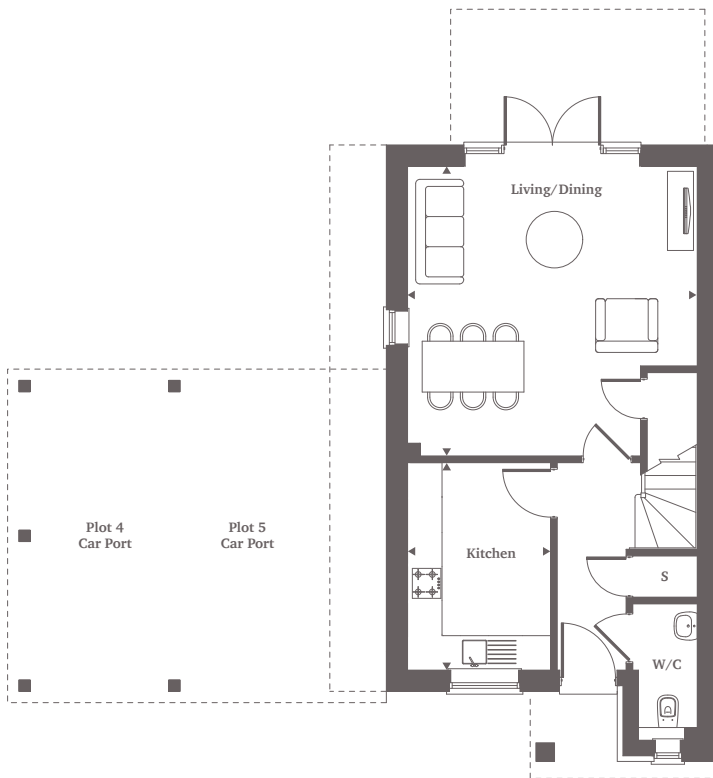


Computer-generated image of Plots 4 & 5, Weyside Grove.

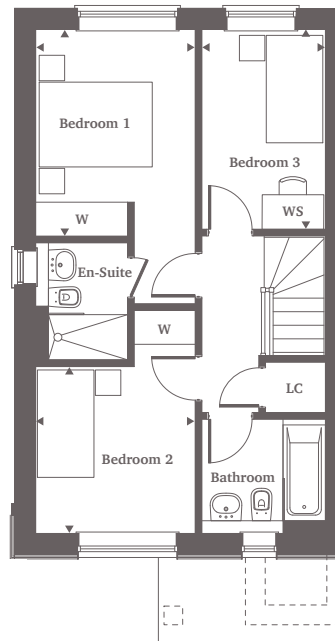


This site plan is a guide for illustrative purposes only. Landscaping shown is indicative only.

No. 4 is a contemporary three bedroom semi-detached house with carport. Downstairs includes a spacious living / dining area with French doors leading to the private garden and a separate shaker kitchen with integrated appliances. Upstairs, the bedroom one benefits from built in wardrobes and an en-suite. Bedroom two also has fitted wardrobes with bedroom three having space for home working



Ground Floor



First Floor

Ground Floor

Living/Dining	5.12m x 5.12m	16'7" x 16'7"
Kitchen	3.67m x 2.53m	12'0" x 8'3"

First Floor

Bedroom 1	3.65m x 2.82m	11'9" x 9'2"
Bedroom 2	2.95m x 2.82m	9'6" x 9'2"
Bedroom 3	3.53m x 2.18m	11'5" x 7'1"

For more information please call 01372 225 007
shanlyhomes.com

SHANLY
 HOMES

◀ Point from which maximum dimensions are measured. Dimensions are intended for guidance only and may vary by plus or minus 7.6cm/3". The plots indicate general layout only which may vary from other plots. Kitchen and bathroom layouts indicative only. W denotes wardrobe. S denotes storage. LC denotes linen cupboard. WS denotes work space. (h) denotes handed plot layout. Please contact sales consultant for more information.