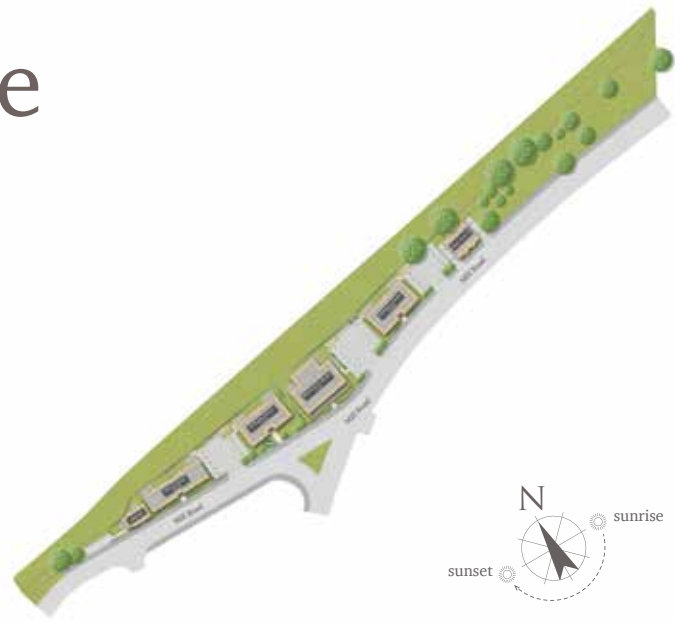


Bloomsbury House

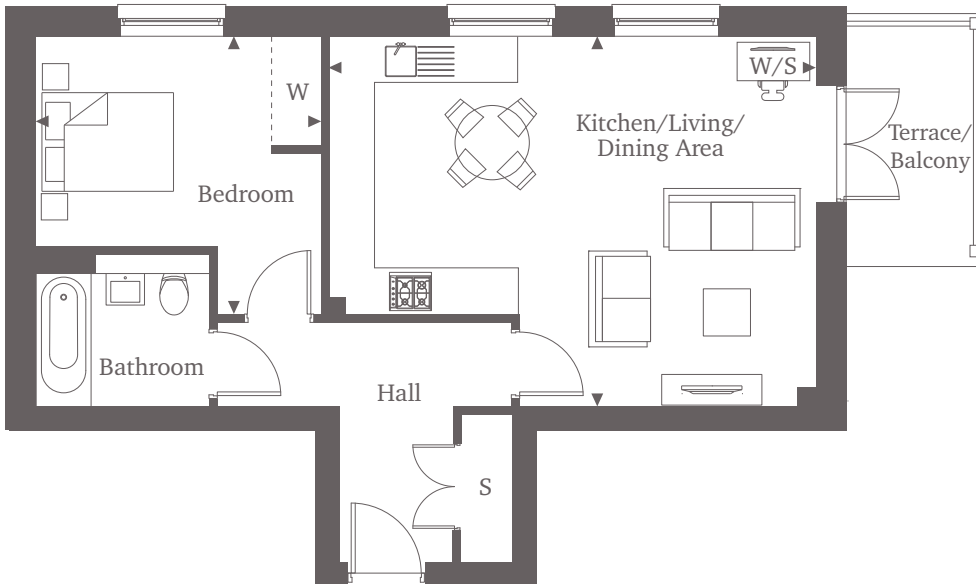
Mill Road | Epsom | Surrey | KT17 4AR



This site plan is a guide for illustrative purposes only. Landscaping shown is indicative only.

Apartment 5

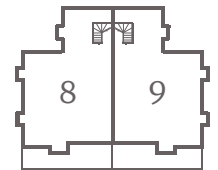
Apartment 5 is a spacious one-bedroom apartment located on the first floor of Bloomsbury House. Boasting an ultra-modern open-plan Kitchen/Living/Dining space, with space for both entertaining and home working. The apartment comes fully equipped with high-specification integrated kitchen appliances and a stylish modern bathroom. Apartment 5 also benefits from a large outdoor terrace, off the main living space.



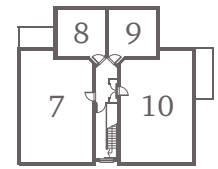
One Bedroom Home

Kitchen/Living/ Dining Area	6.30m x 4.75m	20'8" x 15'7"
Bedroom	3.65m x 3.55m	11'12" x 11'8"

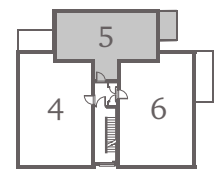
Bloomsbury House



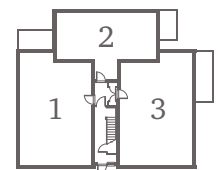
Third Floor



Second Floor



First Floor



Ground Floor

For more information please call **01372 225007**

shanlyhomes.com

◀ Point from which maximum dimensions are measured. Dimensions are intended for guidance only and may vary by plus or minus 7.6cm/3". The plots indicate general layout only which may vary from other plots. Kitchen and bathroom layouts indicative only. S denotes storage. W denotes wardrobe. E/S denotes en-suite. W/S denotes workstation. Please contact a sales consultant for more information.

SHANLY
HOMES