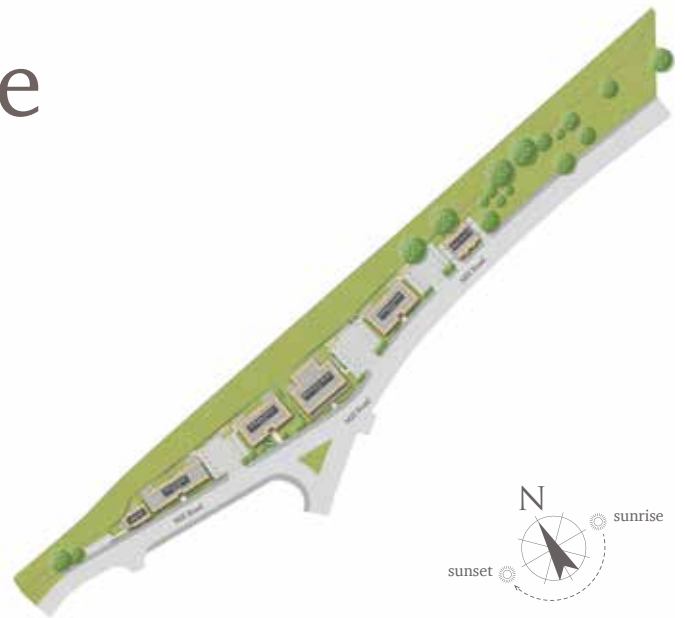


Bloomsbury House

Mill Road | Epsom | Surrey | KT17 4AR

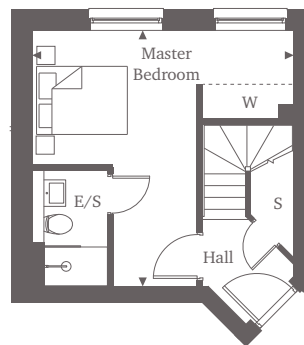
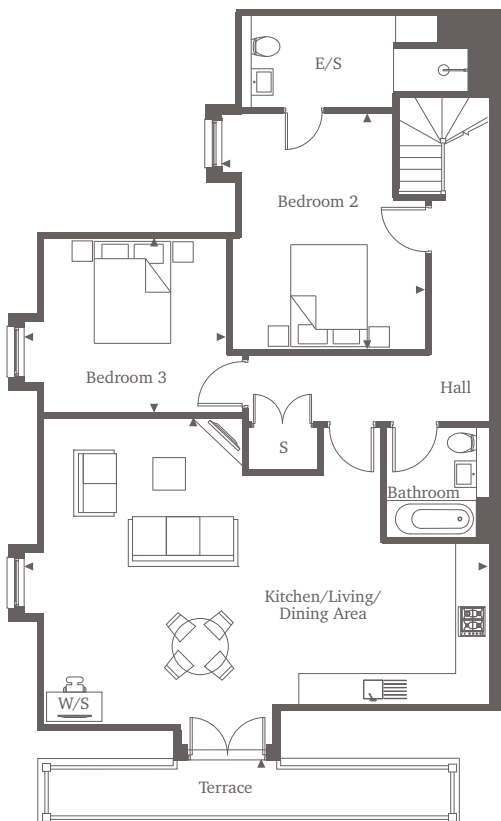
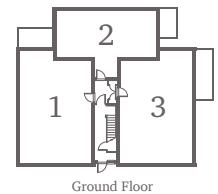
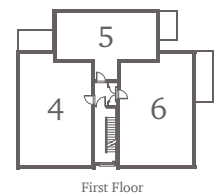
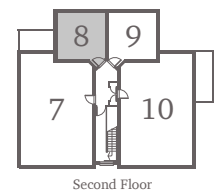
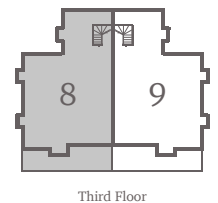


This site plan is a guide for illustrative purposes only. Landscaping shown is indicative only.

Apartment 8

Apartment 8 is a modern three-bedroom apartment, split across the second and third floor of Bloomsbury House. The main floor of the apartment boasts a spacious open-plan Kitchen/Living/Dining space, with ample space for entertaining and home working, two good-sized bedrooms and main bathroom. The second floor hosts the Master suite, complete with modern en-suite and built-in wardrobe. The luxurious apartment comes fully equipped with high-specification integrated appliances and a stylish modern bathroom.

Bloomsbury House



Three Bedroom Home

Kitchen/Living/ Dining Area	8.70m x 5.75m	28'7" x 18'10"
Master Bedroom	4.90m x 4.75m	16'1" x 15'7"
Bedroom 2	4.40m x 3.20m	14'5" x 10'6"
Bedroom 3	3.75m x 3.25m	12'4" x 10'8"

For more information please call 01372 225007

shanlyhomes.com



◀ Point from which maximum dimensions are measured. Dimensions are intended for guidance only and may vary by plus or minus 7.6cm/3". The plots indicate general layout only which may vary from other plots. Kitchen and bathroom layouts indicative only. S denotes storage. W denotes wardrobe. E/S denotes en-suite. W/S denotes workstation. Please contact a sales consultant for more information.