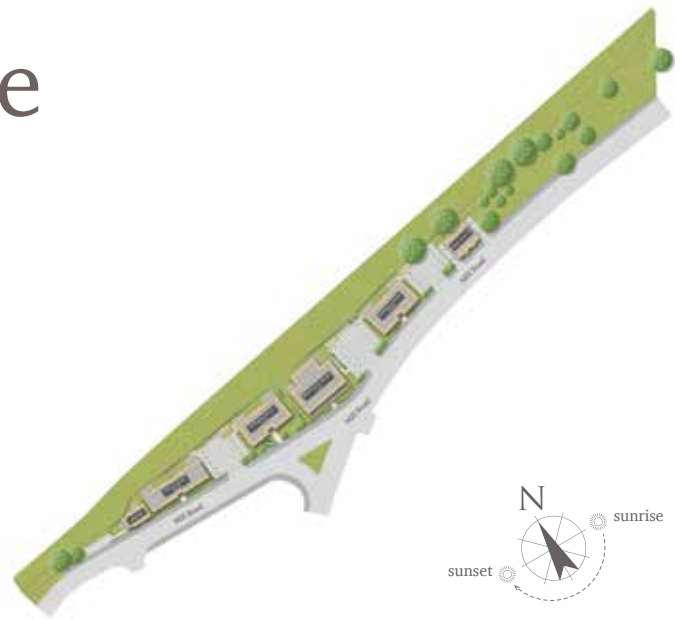


# Bloomsbury House

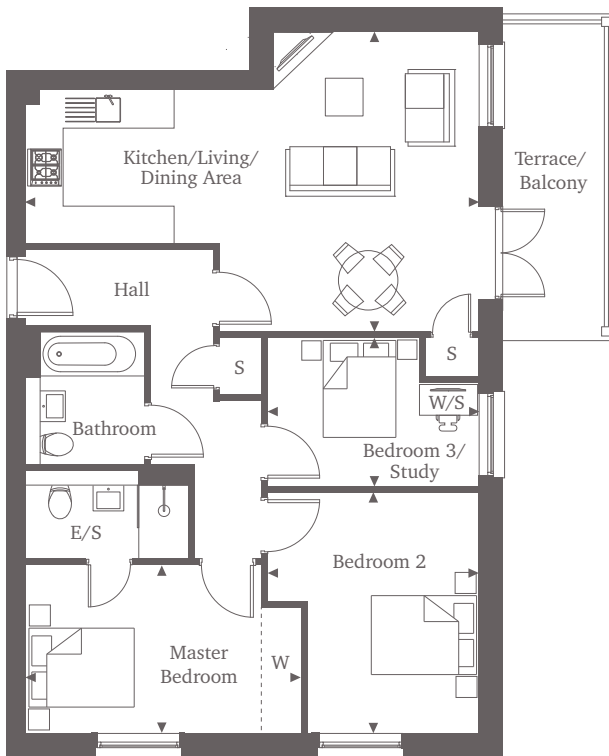
Mill Road | Epsom | Surrey | KT17 4AR



This site plan is a guide for illustrative purposes only. Landscaping shown is indicative only.

## Apartment 3

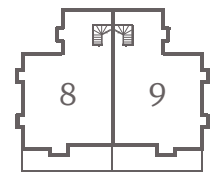
Apartment 3 is a modern three-bedroom home located on the ground floor of Bloomsbury House. Featuring a contemporary open-plan Kitchen/Living/Dining Area, with space for home working and a large balcony to the rear. The apartment comes fully equipped with high-specification integrated kitchen appliances and a stylish bathroom. The master bedroom boasts a spacious en-suite shower room.



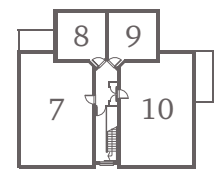
### Three Bedroom Home

Kitchen/Living/ Dining Area	7.30m x 4.80m	23'11" x 15'9"
Master Bedroom	4.45m x 2.70m	14'7" x 8'10"
Bedroom 2	3.85m x 3.40m	12'7" x 11'2"
Bedroom 3/Study	3.40m x 2.35m	11'2" x 7'9"

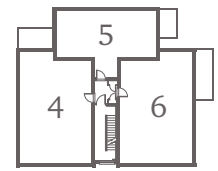
### Bloomsbury House



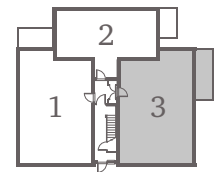
Third Floor



Second Floor



First Floor



Ground Floor

For more information please call 01372 225007

shanlyhomes.com

◀ Point from which maximum dimensions are measured. Dimensions are intended for guidance only and may vary by plus or minus 7.6cm/3". The plots indicate general layout only which may vary from other plots. Kitchen and bathroom layouts indicative only. S denotes storage. W denotes wardrobe. E/S denotes en-suite. W/S denotes workstation. Please contact a sales consultant for more information.

**SHANLY**  
HOMES