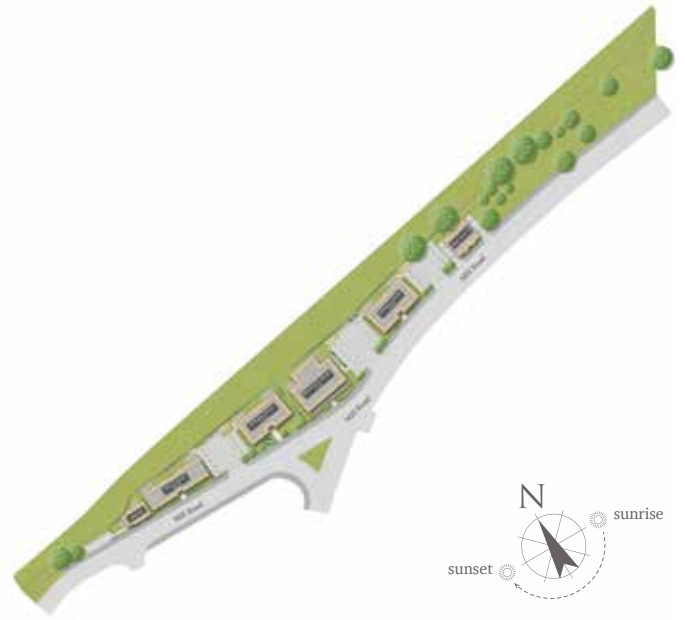


Ellington House

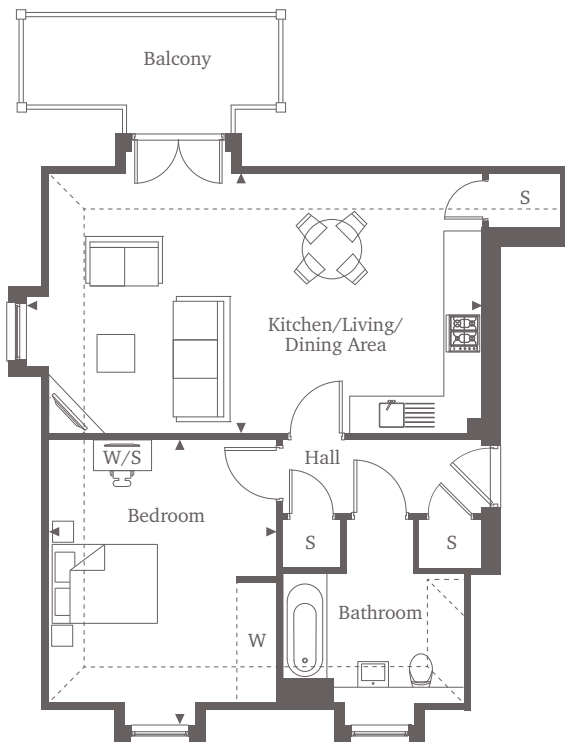
Mill Road | Epsom | Surrey | KT17 4AR



This site plan is a guide for illustrative purposes only. Landscaping shown is indicative only.

Apartment 16

Apartment 16 is a cosy but spacious one-bedroom apartment on the second floor of Ellington House. Featuring a large open-plan Kitchen/Living/Dining Area, with ample storage and plenty of space for entertaining. The bedroom is complete with fitted wardrobes. The apartment comes fully equipped with high-specification integrated appliances and a stylish modern bathroom.



One Bedroom Home

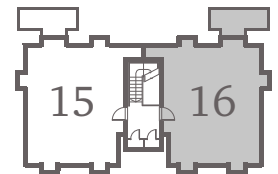
Kitchen/Living/
Dining Area
7.35m x 4.20m

24'1" x 13'9"

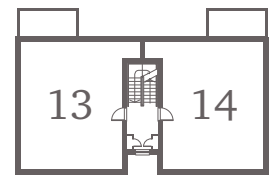
Bedroom
4.60m x 3.65m

13'9" x 11'12"

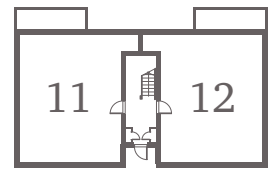
Ellington House



Second Floor



First Floor



Ground Floor

For more information please call 01372 225007

shanlyhomes.com

◀ Point from which maximum dimensions are measured. Dimensions are intended for guidance only and may vary by plus or minus 7.6cm/3". The plots indicate general layout only which may vary from other plots. Kitchen and bathroom layouts indicative only. S denotes storage. W denotes wardrobe. E/S denotes en-suite. W/S denotes workstation. Please contact a sales consultant for more information.

SHANLY
HOMES