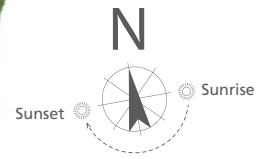


The Gables

BECKENHAM ROAD | BECKENHAM | KENT | BR3 4PP

THE GABLES

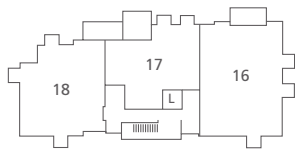
BECKENHAM



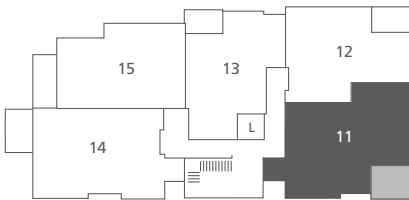
This site plan is a guide for illustrative purposes only. Landscaping shown is indicative only.

Birch Court, Apartment 11B

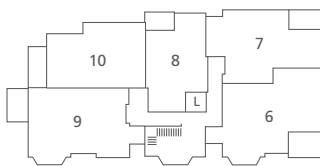
Apartment 11 is located on the second floor of Birch Court. It spans 815 sq ft and has two double bedrooms. Bedroom one is spacious and airy, with large windows allowing the natural light to flood the room. In bedroom one there is an ensuite bathroom, a fitted wardrobe and space for a workstation. Bedroom two is also spacious and has a fitted wardrobe. In the hall there are two built-in storage spaces which are located next to the bathroom. The kitchen, living and dining room are furnished with quality fittings and the kitchen has quality branded appliances.



Third Floor



Second Floor

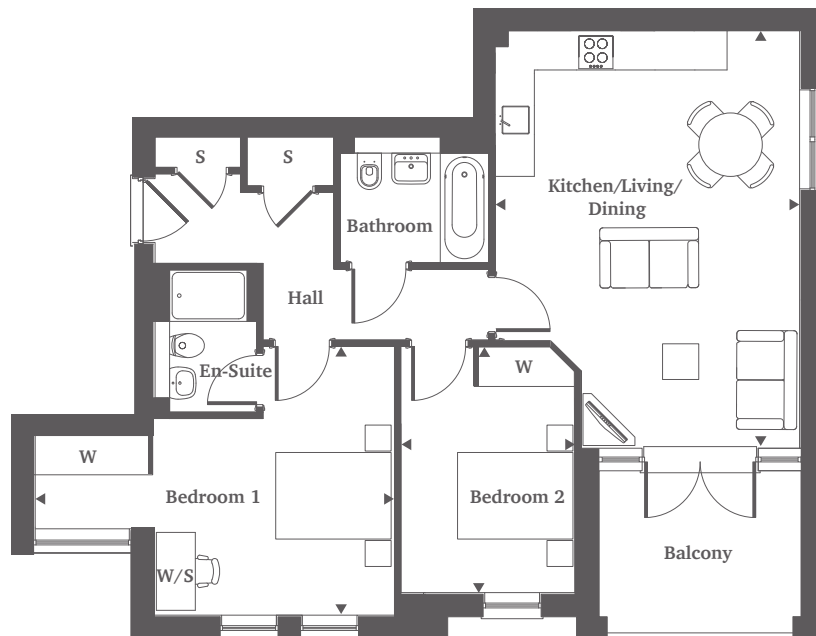


First Floor



Ground Floor

Kitchen/Living/ Dining Area	6.45m x 4.72m	21'2" x 15'5"
Bedroom 1	5.6m x 4.16m	18'4" x 13'6"
Bedroom 2	3.81m x 2.67m	12'5" x 8'8"



For more information please call 01372 225 007
shanlyhomes.com

SHANLY
HOMES

◀ Point from which maximum dimensions are measured. Dimensions are intended for guidance only and may vary by plus or minus 7.6cm/3". The plots indicate general layout only which may vary from other plots. Kitchen and bathroom layouts indicative only. W denotes wardrobe. S denotes storage. WS denotes work space. L denotes lift. Please contact sales consultant for more information.