



LIGHTFIELD

HIGH ST. BARNET, LONDON



APARTMENT 11, 22, 33 & 44

ONE BEDROOM

A STUNNING ONE BEDROOM APARTMENT STYLISHLY DESIGNED TO MAXIMISE SPACE FOR EVERYDAY LIFESTYLES. YOU WILL FIND AN OPEN PLAN KITCHEN/LIVING/DINING AREA WITH FRENCH DOORS LEADING ONTO A LARGE BALCONY/PATIO, AN AREA FOR HOMEWORKING AND A SPACIOUS BEDROOM ALL JUST 30 MINUTES AWAY FROM THE CITY.

Total Internal Area
51.6 sq m | 555 sq ft



LIGHTFIELD

HIGH ST. BARNET, LONDON

APARTMENT 11, 22, 33 & 44 ONE BEDROOM

Kitchen/Living/Dining Area

5.40m x 5.20m 17'7" x 17'1"

Bedroom

4.00m x 3.90m 13'1" x 12'8"

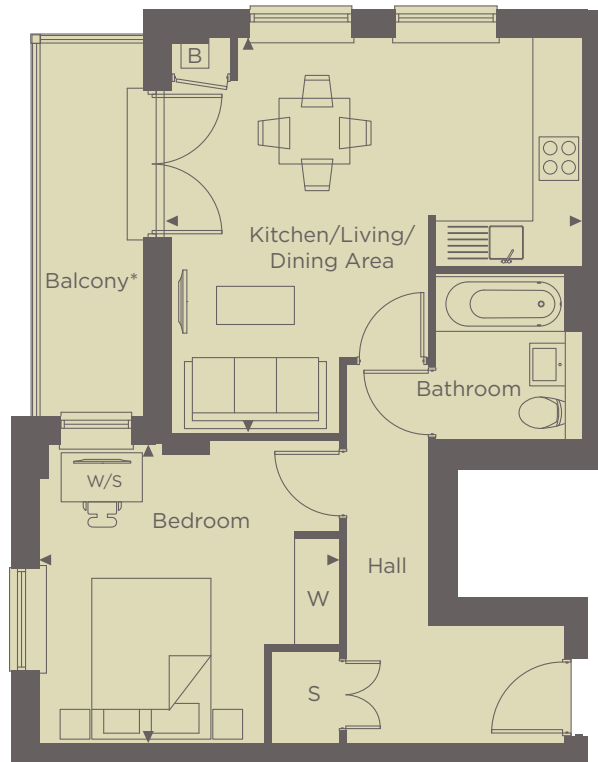
Balcony

5.07m x 1.50m 16'6" x 4'9"

Internal Area

51.6 sq m 555 sq ft

* Patio to plot 11



◀ Point from which maximum dimensions are measured. Dimensions are intended for guidance only and may vary by plus or minus 7.6cm/3". The plots indicate general layout only which may vary from other plots. Kitchen and bathroom layouts indicative only. W denotes wardrobe. S denotes storage. E/S denotes en-suite. W/S denotes workstation. L denotes lift. Please contact sales consultant for more information.

For more information please call 01494 685825 or shanlyhomes.com

SHANLY
HOMES