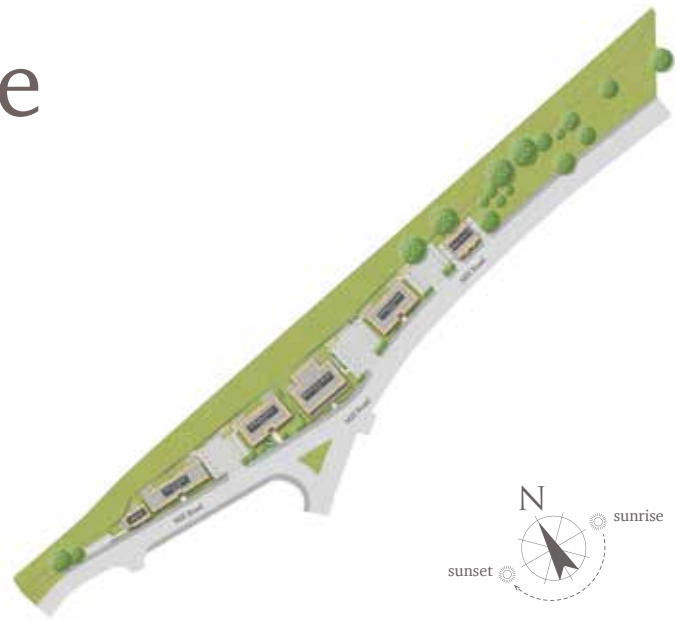


Bloomsbury House

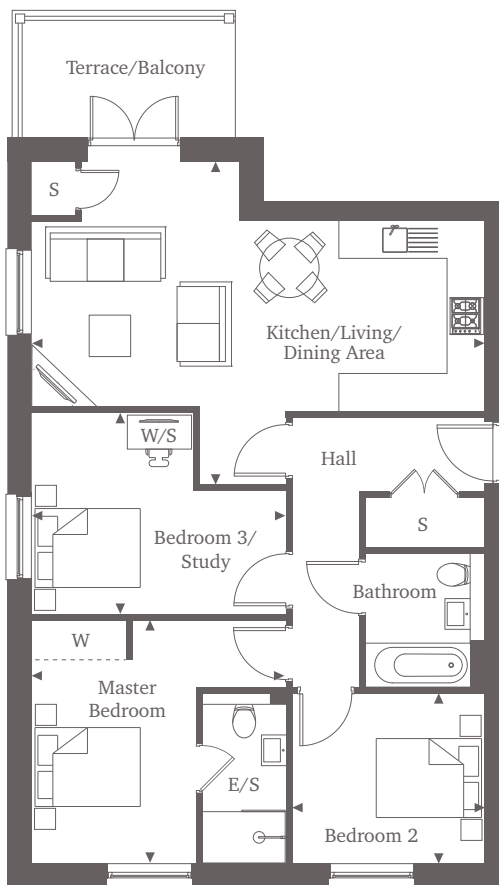
Mill Road | Epsom | Surrey | KT17 4AR



This site plan is a guide for illustrative purposes only. Landscaping shown is indicative only.

Apartment 1

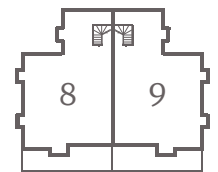
Apartment 1 is a stunning three-bedroom apartment located on the ground floor of Bloomsbury House. Benefitting from a contemporary open-plan Kitchen/Living/Dining Area, with ample space for entertaining and home working. The modern apartment comes fully equipped with high-specification integrated appliances and a stylish bathroom.



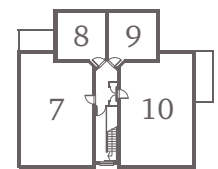
Three Bedroom Home

Kitchen/Living/ Dining Area	7.30m x 5.20m	23'11" x 17'0"
Master Bedroom	4.10m x 3.90m	13'5" x 12'9"
Bedroom 2	3.10m x 2.70m	10'2" x 8'10"
Bedroom 3/Study	4.10m x 3.25m	13'5" x 10'8"

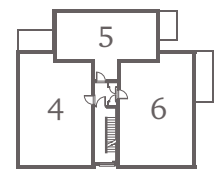
Bloomsbury House



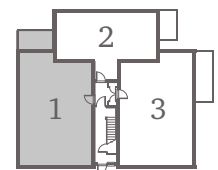
Third Floor



Second Floor



First Floor



Ground Floor

For more information please call 01372 225007

shanlyhomes.com



◀ Point from which maximum dimensions are measured. Dimensions are intended for guidance only and may vary by plus or minus 7.6cm/3". The plots indicate general layout only which may vary from other plots. Kitchen and bathroom layouts indicative only. S denotes storage. W denotes wardrobe. E/S denotes en-suite. W/S denotes workstation. Please contact a sales consultant for more information.