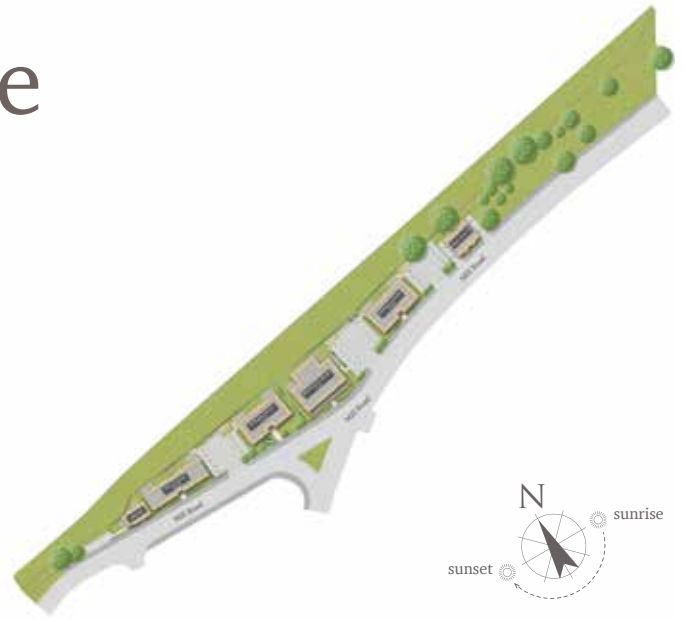


Bloomsbury House

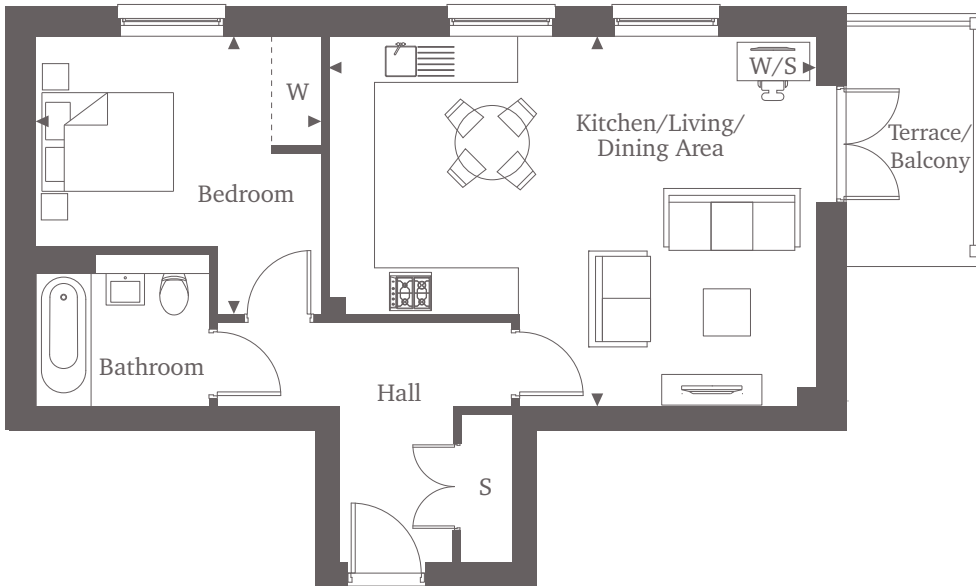
Mill Road | Epsom | Surrey | KT17 4AR



This site plan is a guide for illustrative purposes only. Landscaping shown is indicative only.

Apartment 2

Apartment 2 is a spacious one-bedroom apartment located on the ground floor of Bloomsbury House. Boasting an ultra-modern open-plan Kitchen/Living/Dining space, with space for both entertaining and home working. The apartment comes fully equipped with high-specification integrated kitchen appliances and a stylish modern bathroom. Apartment 2 also benefits from a large outdoor terrace, off the main living space.

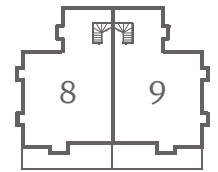


One Bedroom Home

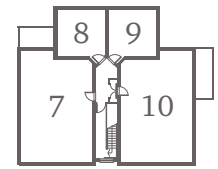
Kitchen/Living/
Dining Area
6.30m x 4.75m 20'8" x 15'7"

Bedroom
3.65m x 3.55m 11'12" x 11'8"

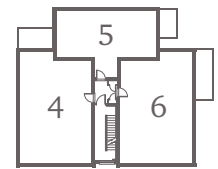
Bloomsbury House



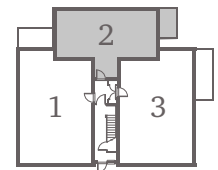
Third Floor



Second Floor



First Floor



Ground Floor

For more information please call **01372 225007**

shanlyhomes.com

◀ Point from which maximum dimensions are measured. Dimensions are intended for guidance only and may vary by plus or minus 7.6cm/3". The plots indicate general layout only which may vary from other plots. Kitchen and bathroom layouts indicative only. S denotes storage. W denotes wardrobe. E/S denotes en-suite. W/S denotes workstation. Please contact a sales consultant for more information.

SHANLY
HOMES