



# LIGHTFIELD

HIGH ST. BARNET . LONDON



## THE TOWN HOUSE COLLECTION 3, 4(h), 7 & 8(h) FOUR BEDROOM

A STUNNING FOUR BEDROOM TOWNHOUSE STYLISHLY DESIGNED TO MAXIMISE SPACE. YOU WILL FIND LARGE FAMILY AREAS, BI-FOLD DOORS LEADING INTO YOUR GARDEN AND SPACIOUS BEDROOMS ALL WITHIN A BEAUTIFUL SETTING.

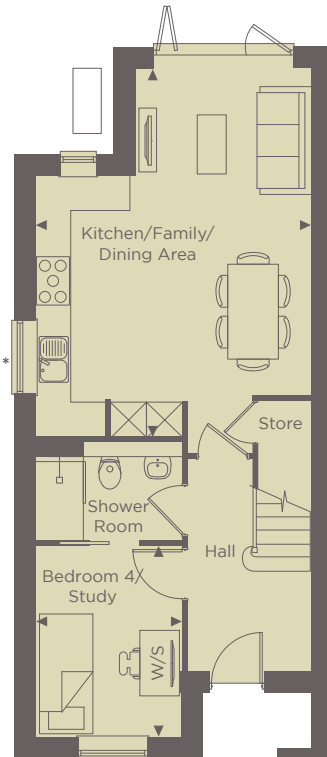
**Total Internal Area**  
134.9 sq m | 1,452 sq ft



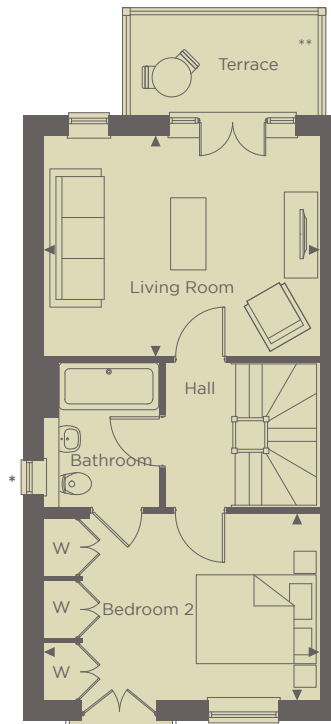
# LIGHTFIELD

HIGH ST. BARNET . LONDON

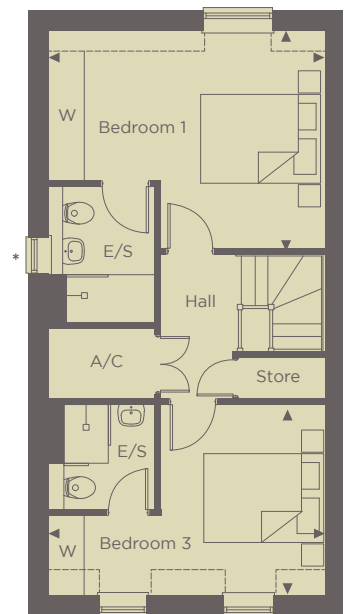
## THE TOWN HOUSE COLLECTION 3, 4(h), 7 & 8(h) FOUR BEDROOM



GROUND FLOOR



FIRST FLOOR



SECOND FLOOR

### GROUND FLOOR

#### Kitchen/Family/Dining Area

6.20m x 4.61m      20'4" x 15'1"

#### Bedroom 4/Study

3.20m x 2.39m      10'6" x 7'10"

### FIRST FLOOR

#### Living Room

4.61m x 3.70m      15'1" x 12'2"

#### Terrace

3.26m x 1.60m      10'8" x 5'2"

#### Bedroom 2

4.61m x 3.07m      15'1" x 10'1"

### SECOND FLOOR

#### Bedroom 1

4.61m x 3.70m      15'1" x 12'1"

#### Bedroom 3

4.61m x 3.12m      15'1" x 10'2"

#### Internal Area

134.9 sq m      1,452 sq ft

◀ Point from which maximum dimensions are measured. Dimensions are intended for guidance only and may vary by plus or minus 7.6cm/3". The plots indicate general layout only which may vary from other plots. --- denotes skirting line. Kitchen and bathroom layouts indicative only. W denotes wardrobe. S denotes storage. A/C denotes airing cupboard. E/S denotes en-suite. W/S denotes workstation. ASHP denotes air source heat pump. (h) denotes handed. Please contact sales consultant for more information.  
\*Window handed and to House No. 8 only. \*\* Privacy screen.

For more information please call 01494 685825 or [shanlyhomes.com](http://shanlyhomes.com)

