

Broadleaf Place

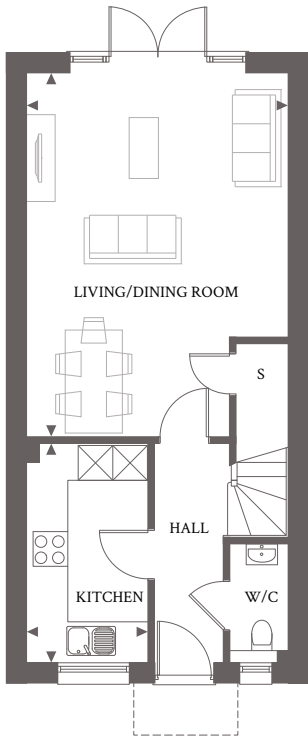
Broadleaf Place | Whyteleafe Road | Caterham | Surrey | CR3 5ED



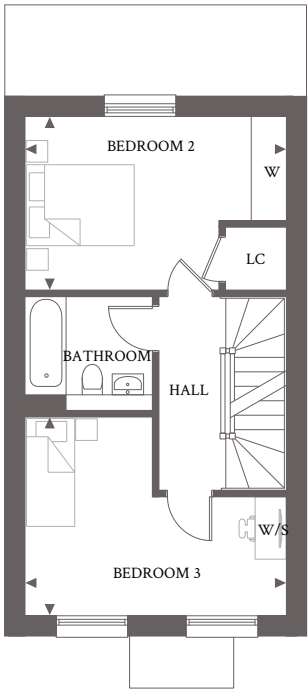
This site plan is a guide for illustrative purposes only. Landscaping shown is indicative only.

Plot 16

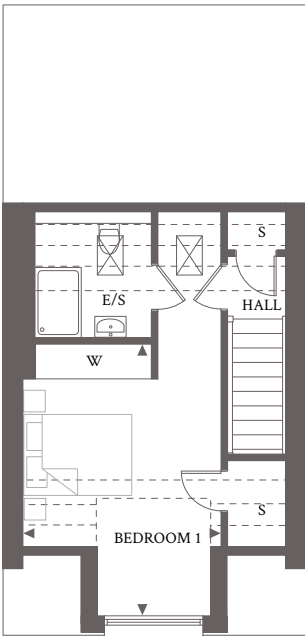
This beautiful 3 bedroom house is spread over 3 floors and features an open plan living/dining room with ample space. It also features French doors to bring the outside in and flood the room with plenty of natural light. The stylish modern kitchen is fitted with integrated high specification appliances. On an exclusive floor of its own at the top of the house bedroom one benefits from a large built in wardrobe, en-suite shower room and storage cupboards plus a skylight above the hall adding natural light. Whilst spacious bedrooms 2 and 3 make use of a luxury family bathroom on the first floor and bedroom 3 has ample space for a designated work station should you choose to work from home. Private parking is further added to the plot.



GROUND FLOOR



FIRST FLOOR



SECOND FLOOR

LIVING/DINING ROOM	6.26m x 4.50m 20'6" x 14'9"
KITCHEN	3.70m x 2.07m 12'2" x 6'10"
BEDROOM 1 PLUS EN-SUITE	4.68m x 3.40m 15'4" x 11'2"
BEDROOM 2	4.50m x 2.98m 14'9" x 9'9"
BEDROOM 3	4.50m x 3.41m 14'9" x 11'2"

For more information please call 01372 225007
shanlyhomes.com

☒ Tall kitchen units. --- Denotes sloping ceiling. ☒ Skylight. +Window to Plots 17*, 18 & 27.

◀ Point from which maximum dimensions are measured. Dimensions are intended for guidance only and may vary by plus or minus 7.6cm/3". The plots indicate general layout only which may vary from other plots. Kitchen and bathroom layouts indicative only. S denotes storage. W denotes wardrobe. W/S denotes workstation. LC denotes linen cupboard. Please contact Sales Consultant for more information.

