



WATERSIDE QUARTER

MAIDENHEAD

TRE ARCHI APARTMENTS



APARTMENT 155

One bedroom apartment

The design of this apartment really maximises on space, offering the flexibility of open-plan living to suit your lifestyle. The generous and bright kitchen/dining/living area features a private balcony accessed via French doors, extending your living space to relax, create your own home office or entertain.

Situated on the fourth floor, this one-bedroom apartment has a range of interior features, including high-specification, energy-efficient, integrated kitchen appliances, and ample storage. The double bedroom enjoys fitted wardrobes, with a contemporary bathroom just off the entrance hallway. Your new Tre Archi home benefits from underground gated parking and car charging points.

Total internal area: 51.14 sq. mts. 550 sq. ft.



WATERSIDE QUARTER
MAIDENHEAD

TRE ARCHI APARTMENTS

APARTMENT 155 ▶

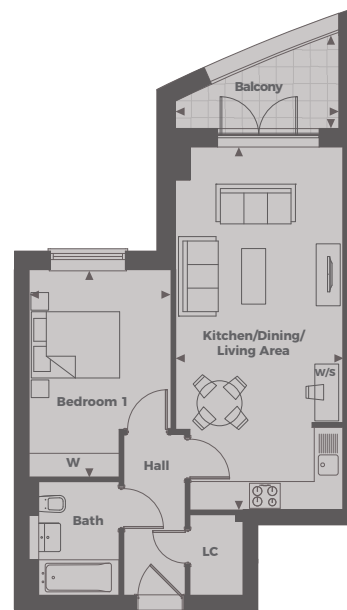
One bedroom

Kitchen/Dining/Living Area
7.70 m x 3.50 m 25'3" x 11'5"

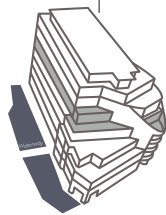
Bedroom 1
4.40 m x 3.00 m 14'5" x 9'10"

Balcony
3.46 m x 2.01 m 11'4" x 6'7"

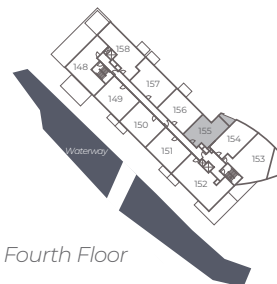
Total Internal Area
51.14 sq. mts. 550 sq. ft.



Tre Archi Apartments



Floor Locator



Fourth Floor

◀ Point from which maximum dimensions are measured. Dimensions are intended for guidance only and may vary by plus or minus 7.6cm/3". The plots indicate general layout only which may vary from other plots. Kitchen and bathroom layouts indicative only. W denotes Wardrobe. LC denotes Linen Cupboard. S denotes Storage. E/S denotes En-Suite. W/S denotes Workstation. (h) denotes Handed. Please contact sales consultant for more information.