



ASHCROFT PLACE

STAINES-UPON-THAMES

LANGLEY ROAD | STAINES-UPON-THAMES | SURREY | TW18 2EH



Computer generated image of plot 7

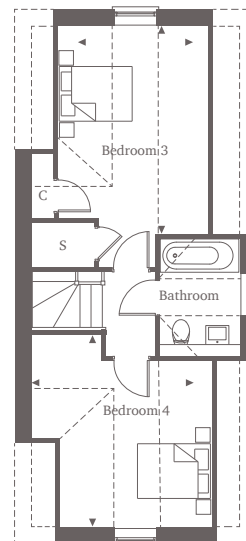
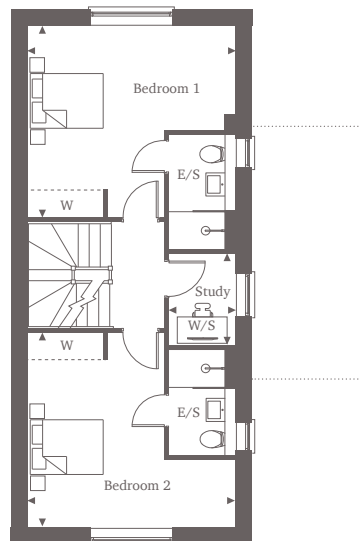
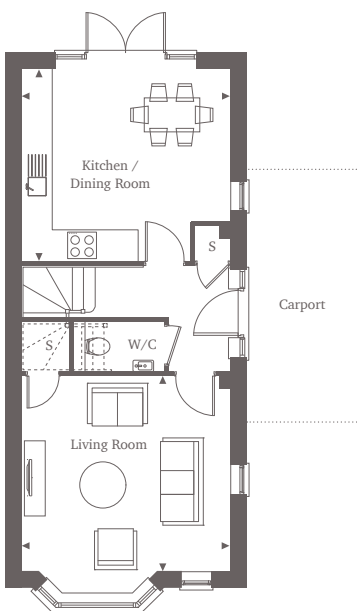


This site plan is a guide for illustrative purposes only. Landscaping shown is indicative only.

Plot 7

Four Bedroom Home 133.97 sq m | 1442 sq ft

Indulge in the charm of this 4-bedroom home, featuring a private driveway and carport. The entrance is located in the middle of the property, beneath the carport, and opens to a hallway showcasing a downstairs W/C and a storage area. To the front of the property, a spacious living room awaits, adorned with a bay window and an understairs storage space. To the back, the kitchen/dining room offers ample space and abundant natural light. The first floor boasts two double bedrooms, each with generous en-suites and built-in wardrobes. A study room is positioned between the bedrooms, providing a versatile space for work or leisure. The second floor features two additional double bedrooms, sharing a bathroom located between them.



Ground Floor

Living Room
4.49m x 4.18m 14'7" x 13'7"

Kitchen/Dining Room
4.49m* x 4.12m* 14'9" x 13'6"

First Floor

Bedroom 1
4.49m* x 4.12m* 14'9" x 13'6"

Bedroom 2
4.49m* x 4.18m* 14'9" x 13'9"

Study
1.95m x 1.42m 6'5" x 4'8"

Second Floor

Bedroom 3
4.42m* x 2.51m 14'5" x 8'3"

Bedroom 4
4.18m* x 2.51m* 13'7" x 8'2"

For more information, please call 01784 913 033
shanlyhomes.com

SHANLY
HOMES

◀ Point from which maximum dimensions are measured. * Denotes (max) dimension. Dimensions are intended for guidance only and may vary by plus or minus 7.6cm/3". The plots indicate general layout only which may vary from other plots. Kitchen and bathroom layouts indicative only. S denotes storage. W denotes wardrobe. E/S denotes en-suite. W/S denotes work station. C denotes cylinder opd. --- Skirting line denotes restricted head height. Dimensions taken from 1.5m. Please contact a sales consultant for more information.