



ASHCROFT PLACE

STAINES-UPON-THAMES

LANGLEY ROAD | STAINES-UPON-THAMES | SURREY | TW18 2EH



Computer generated image of Apartments



This site plan is a guide for illustrative purposes only. Landscaping shown is indicative only.

Apartment 17

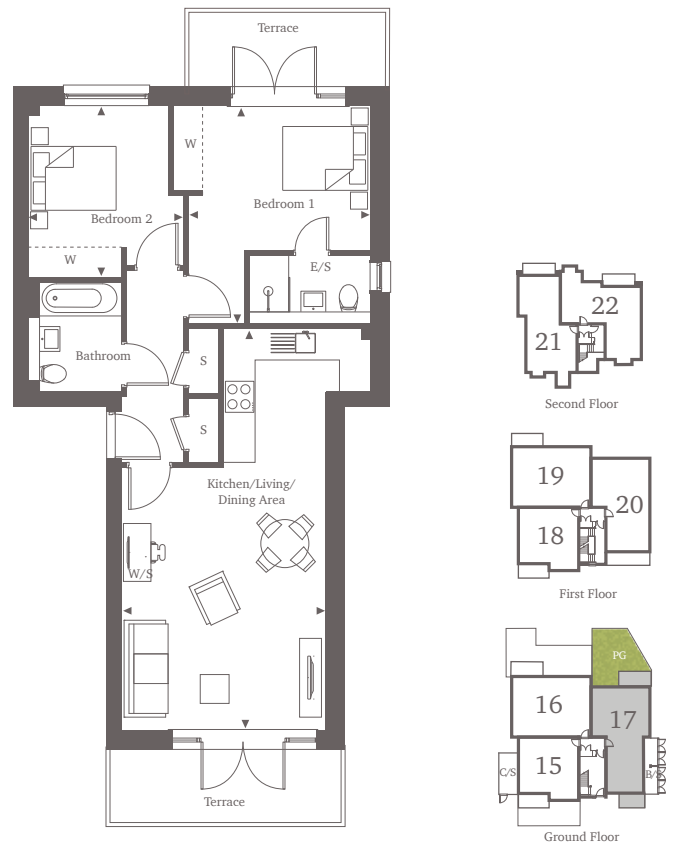
Ground Floor

Experience the best of ground floor living in this inviting 2-bedroom apartment. Benefit from a large private terrace and garden area, perfect for outdoor entertaining or relaxation. The apartment features a spacious open plan kitchen and living area, complete with integrated appliances and ample countertop space. Both bedrooms are doubles and include built-in wardrobes, while the master bedroom offers the additional luxury of an en-suite bathroom and a private south-facing terrace. The main bathroom, generously sized, is conveniently located near the entrance, accompanied by plenty of storage space.

Two Bedroom Home

72.19 sq m | 777 sq ft

Kitchen/Living/Dining Area	8.35m* x 4.20m*	27'5" x 13'8"
Bedroom 1	4.52m* x 3.76m*	14'8" x 12'3"
Bedroom 2	3.31m* x 3.21m*	10'9" x 10'5"



For more information, please call 01784 913 033

shanlyhomes.com



◀ Point from which maximum dimensions are measured. C/S denotes cycle store. B/S denotes bin store. * Denotes (max) dimension. Dimensions are intended for guidance only and may vary by plus or minus 7.6cm/3". The plots indicate general layout only which may vary from other plots. Kitchen and bathroom layouts indicative only. S denotes storage. W denotes wardrobe. E/S denotes en-suite. W/S denotes work station. Please contact a sales consultant for more information. PG denotes private garden to plot.