



# ASHCROFT PLACE

STAINES-UPON-THAMES

LANGLEY ROAD | STAINES-UPON-THAMES | SURREY | TW18 2EH



Computer generated image of Apartments

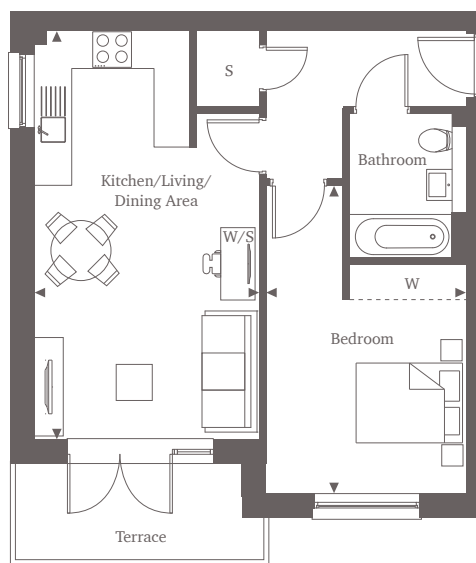
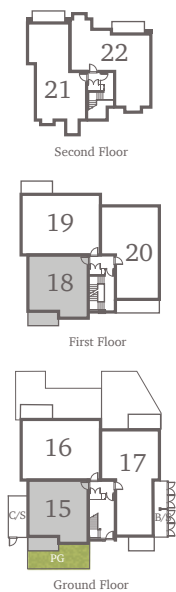


This site plan is a guide for illustrative purposes only. Landscaping shown is indicative only.

## Apartments 15 & 18

### Ground & First Floors

Welcome to this elegant 1-bedroom apartment. Step into the open plan kitchen and living area, complete with integrated appliances and plenty of space for a workstation. The south-facing window fills the room with natural light and opens to a private terrace, providing a delightful outdoor retreat. The generous double bedroom features a built-in wardrobe and a large south-facing window. The bathroom and storage area are conveniently located near the entrance of the property.



*One Bedroom Home*  
*51.19 sq m | 551 sq ft*

Kitchen/Living/Dining Area  
6.72m<sup>\*</sup> x 3.72m<sup>\*</sup> 22'1"<sup>\*</sup> x 12'2"<sup>\*</sup>

Bedroom  
5.06m<sup>\*</sup> x 3.30m<sup>\*</sup> 16'7"<sup>\*</sup> x 10'10"<sup>\*</sup>

For more information, please call 01784 913 033  
[shanlyhomes.com](http://shanlyhomes.com)



◀ Point from which maximum dimensions are measured. C/S denotes cycle store. B/S denotes bin store. \* Denotes (max) dimension. Dimensions are intended for guidance only and may vary by plus or minus 7.6cm/3". The plots indicate general layout only which may vary from other plots. Kitchen and bathroom layouts indicative only. S denotes storage. W denotes wardrobe. E/S denotes en-suite. W/S denotes work station. Please contact a sales consultant for more information. PG denotes private garden to plot.