



# ASHCROFT PLACE

STAINES-UPON-THAMES

LANGLEY ROAD | STAINES-UPON-THAMES | SURREY | TW18 2EH



Computer generated image of Apartments

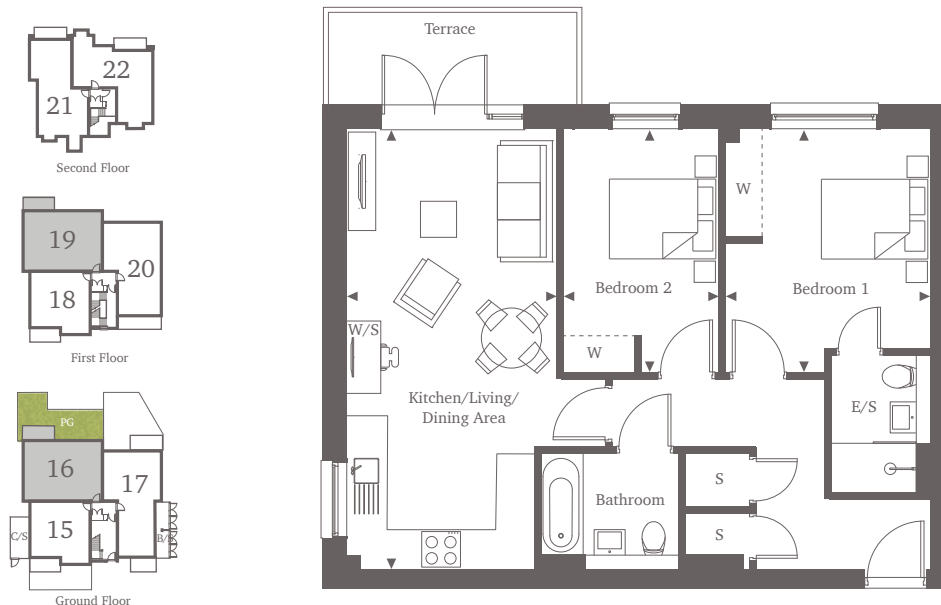


This site plan is a guide for illustrative purposes only. Landscaping shown is indicative only.

## Apartments 16 & 19

### Ground & First Floors

Indulge in the comfort of this 2-bedroom apartment, boasting two generous double bedrooms with fitted wardrobes. The master bedroom also features an en-suite bathroom for added convenience. Ample storage space awaits near the entrance, while further down the hallway, you'll find a generously sized main bathroom. The open plan kitchen and living area is equipped with integrated appliances and offers abundant space for relaxation. The living area opens out onto a north-facing terrace, providing an ideal spot to enjoy the outdoors.



### Two Bedroom Home 70.42 sq m | 758 sq ft

Kitchen/Living/Dining Area	7.25m <sup>*</sup> x 3.46m <sup>*</sup>	23'8" x 11'4"
Bedroom 1	4.01m <sup>*</sup> x 3.37m <sup>*</sup>	13'2" x 11'1"
Bedroom 2	4.01m x 2.57m	13'2" x 8'5"

For more information, please call 01784 913 033  
shanlyhomes.com



◀ Point from which maximum dimensions are measured. C/S denotes cycle store. B/S denotes bin store. \* Denotes (max) dimension. Dimensions are intended for guidance only and may vary by plus or minus 7.6cm/3". The plots indicate general layout only which may vary from other plots. Kitchen and bathroom layouts indicative only. S denotes storage. W denotes wardrobe. E/S denotes en-suite. W/S denotes work station. Please contact a sales consultant for more information. PG denotes private garden to plot.