

Oaklands Park

Oaklands Park Littleworth Road | Esher | Surrey | KT10 9PN

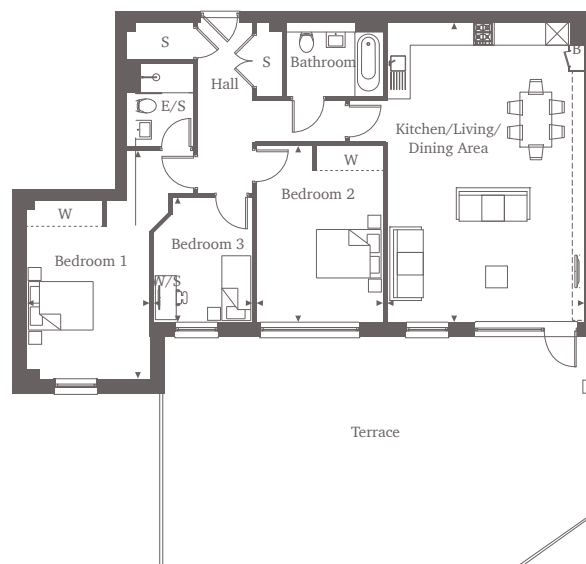


This site plan is a guide for illustrative purposes only. Landscaping shown is indicative only.

Apartment 4

Ground Floor

Indulge in the epitome of luxury with this remarkable three-bedroom apartment. The impressive kitchen and living area surpass expectations, captivating residents, and guests alike. Flowing effortlessly onto the expansive terrace, which spans almost the entire length of the apartment, it creates an idyllic outdoor oasis. Two of the three bedrooms are doubles and feature built-in wardrobes, while one of them also boasts a lavish en-suite. A strategically positioned study room / third bedroom is in the middle of the two double bedrooms, offering a versatile space.



Three Bedroom Home 108.79 sq m | 1171 sq ft

Kitchen/Living/Dining Area	
7.86m x 6.18m*	25'9" x 20'3"
Bedroom 1	
6.05m x 4.41m*	19'10" x 14'5"
Bedroom 2	
4.63m x 3.37m	15'2" x 11'1"
Bedroom 3	
3.28m x 2.57m*	10'9" x 8'5"
Terrace	
68 sq m	731 sq ft

For more information, please call 01372 679 383
shanlyhomes.com

SHANLY
HOMES

◀ Point from which maximum dimensions are measured. * Denotes (max) dimension. Dimensions are intended for guidance only and may vary by plus or minus 7.6cm/3". The plots indicate general layout only which may vary from other plots. Kitchen and bathroom layouts indicative only. S denotes storage. W denotes wardrobe. E/S denotes en-suite. W/S denotes work station. B denotes boiler. ----- Denotes reduced head height. B/S denotes bin store. C/S denotes cycle store. Please contact a sales consultant for more information.