



WATERSIDE QUARTER  
MAIDENHEAD

## TRE ARCHI APARTMENTS



## APARTMENTS 111, 128, 143

One bedroom apartments

A unique balcony space is a key feature of these homes which are situated on either the first, second or third floor. This private, outdoor area is accessed via French doors leading off from the delightful, open-plan kitchen/dining/living area and really extends the living space. You'll love spending time in this bright room which has space for homeworking. Your kitchen benefits from sleek, high-specification, integrated appliances

The double bedroom enjoys a fitted wardrobe, with the contemporary bathroom just next door to the bedroom. These apartments include ample storage, private underground gated parking, and electric car charging points.

Total internal area: 51.14 sq. mts. 550 sq. ft.





# WATERSIDE QUARTER MAIDENHEAD

## TRE ARCHI APARTMENTS

### APARTMENTS 111, 128, 143 ►

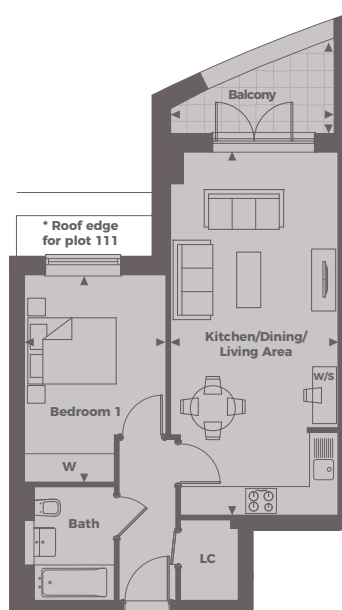
One bedroom

*Kitchen/Dining/Living Area*  
7.70 m x 3.50 m 25'3" x 11'5"

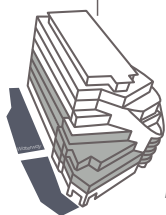
*Bedroom 1*  
4.40 m x 3.00 m 14'5" x 9'10"

*Balcony*  
3.46 m x 2.01 m 11'4" x 6'7"

**Total Internal Area**  
**51.14 sq. mts. 550 sq. ft.**



Tre Archi Apartments



Floor Locator



First Floor



Second Floor



Third Floor

◀ Point from which maximum dimensions are measured. Dimensions are intended for guidance only and may vary by plus or minus 7.6cm/3". The plots indicate general layout only which may vary from other plots. Kitchen and bathroom layouts indicative only. W denotes Wardrobe. LC denotes Linen Cupboard. S denotes Storage. E/S denotes En-Suite. W/S denotes Workstation. (h) denotes Handed. Please contact sales consultant for more information.