



WATERSIDE QUARTER
MAIDENHEAD

TRE ARCHI APARTMENTS



APARTMENTS 158, 169

Two bedroom apartments

You'll adore the bright kitchen/dining/living area and elegant outside spaces offered by these stylish apartments. Situated on the fourth or fifth floor, these homes feature both a private terrace and balcony. The open-plan living area leads out to the spacious terrace, with French doors or a window letting light illuminate the space. A second window makes this room a bright and welcoming dual-aspect. There is plenty of room for a workstation here too, with a designated space available.

Bedroom one is a spacious light-filled suite with French doors leading to a private balcony. There is also a luxury en-suite and fitted wardrobe. Bedroom two is also a double and has a fitted wardrobe. The family bathroom is just across the hall. Both homes come with underground gated parking, car charging points and ample storage.

Total internal area: 68.39 sq. mts. 736 sq. ft.



WATERSIDE QUARTER MAIDENHEAD

TRE ARCHI APARTMENTS

APARTMENTS 158, 169 ►

Two bedroom

Kitchen/Dining/Living Area
7.00 m x 4.30 m 22'11" x 14'1"

Bedroom 1
3.60 m x 3.50 m 11'9" x 11'6"

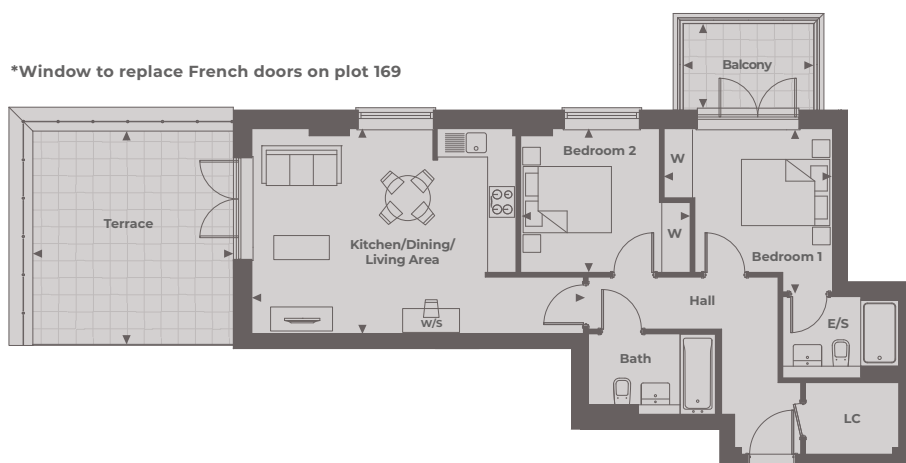
Bedroom 2
3.60 m x 3.50 m 11'9" x 11'5"

Terrace (Plot 158)
4.61 m x 4.23 m 15'1" x 13'11"

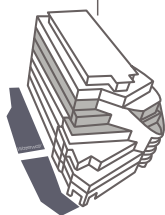
Balcony (Plot 158 & 169)
2.75 m x 1.85 m 9'0" x 6'1"

Total Internal Area
68.39 sq. mts. 736 sq. ft.

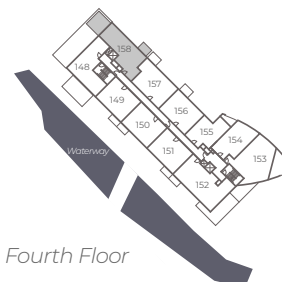
***Window to replace French doors on plot 169**



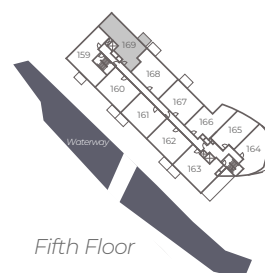
Tre Archi Apartments



Floor Locator



Fourth Floor



Fifth Floor

◀ Point from which maximum dimensions are measured. Dimensions are intended for guidance only and may vary by plus or minus 7.6cm/3". The plots indicate general layout only which may vary from other plots. Kitchen and bathroom layouts indicative only. W denotes Wardrobe. LC denotes Linen Cupboard. S denotes Storage. E/S denotes En-Suite. W/S denotes Workstation. (h) denotes Handed. Please contact sales consultant for more information.