



WATERSIDE QUARTER TRE ARCHI | CORE 1



APARTMENT 2

Two bedroom apartment

This spacious apartment directly overlooks the waterways and has real modern charm. Situated on the ground floor of Tre Archi, this home enjoys a range of stunning interior features, including high-specification, energy-efficient, integrated kitchen appliances. A useful utility room is a bonus, freeing up kitchen space for food preparation. The open-plan kitchen/dining/living area is the perfect hub for relaxing, entertaining, or homeworking.

The double bedrooms both have fitted wardrobes, in addition to ample hallway and utility storage space. Bedroom one benefits from a luxury en-suite, while bedroom two is just across the hallway from the contemporary family bathroom. Your new home comes with a range of additional features including private underground gated parking and car charging points.

Total internal area: 83.10 sq. mts. 894 sq. ft.



WATERSIDE QUARTER TRE ARCHI | CORE 1

APARTMENT 2 ▶

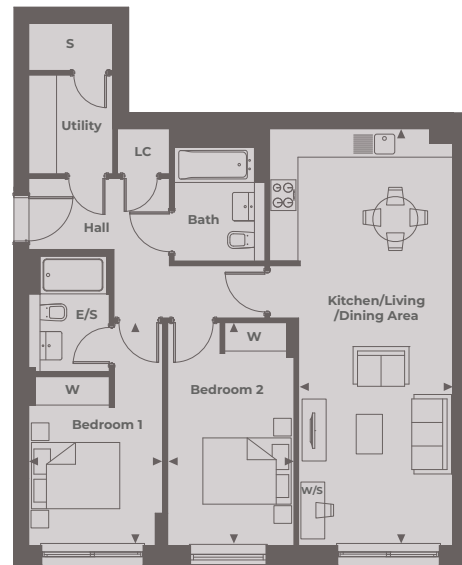
Two bedroom

Kitchen/Dining/Living Area
8.80 m x 3.37 m 28'10" x 11'1"

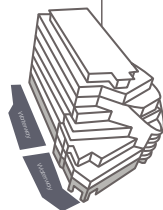
Bedroom 1
4.70 m x 2.84 m 15'5" x 9'4"

Bedroom 2
4.70 m x 2.67 m 15'5" x 8'9"

Total Internal Area
83.10 sq. mts. 894 sq. ft.



Tre Archi Apartments



Floor Locator



Ground Floor

◀ Point from which maximum dimensions are measured. Dimensions are intended for guidance only and may vary by plus or minus 7.6cm/3". The plots indicate general layout only which may vary from other plots. Kitchen and bathroom layouts indicative only. W denotes Wardrobe. LC denotes Linen Cupboard. S denotes Storage. E/S denotes En-Suite. W/S denotes Workstation. (h) denotes Handed. Please contact sales consultant for more information.