



WATERSIDE QUARTER TRE ARCHI | CORE 2



APARTMENT 29

Two bedroom apartment

This exceptionally spacious fourth floor apartment offers a desirable lifestyle. With two large, private terraces to choose from you will never be short of somewhere to sit and relax. The stylish, open-plan kitchen/dining/living area features sliding doors leading out onto the curved first terrace, making it ideal for entertaining friends. This room also has space for a workstation. This two-bedroom apartment has plenty of interior features, including a sleek, kitchen with high-specification, integrated appliances.

The second terrace is perfectly positioned off bedroom two and offers a lovely area to enjoy your morning coffee. Bedroom one enjoys a luxury en-suite and fitted wardrobe. This apartment also has a contemporary bathroom and plenty of storage. Private underground gated parking and car charging points add to the sense of quality at Tre Archi.

Total internal area: 89.22 sq. mts. 960 sq. ft.



WATERSIDE QUARTER TRE ARCHI | CORE 2

APARTMENT 29 ►

Two bedroom

Kitchen/Dining/Living Area
6.90 m x 4.50 m 22'7" x 14'9"

Bedroom 1
5.40 m x 2.80 m 17'8" x 9'2"

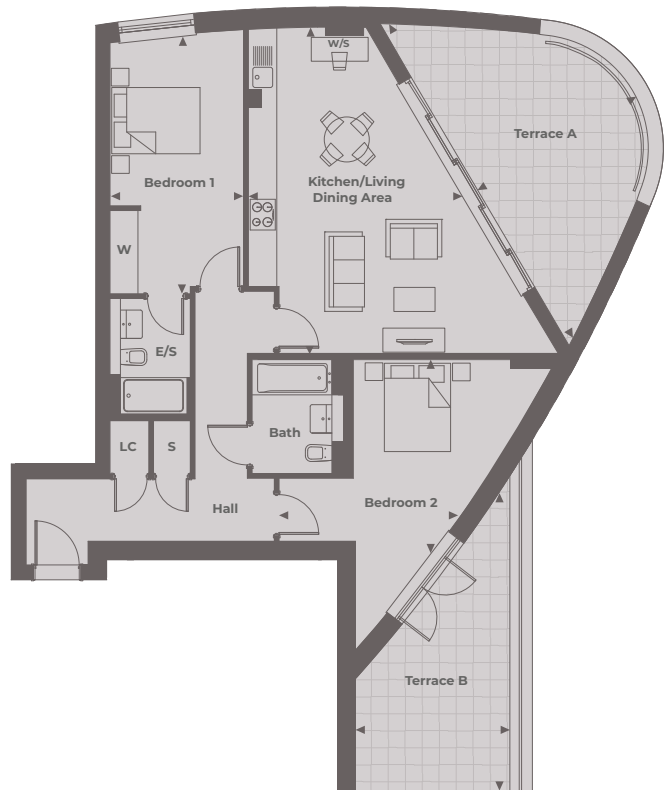
Bedroom 2
4.10 m x 3.80 m 13'5" x 12'5"

Terrace A
7.89 m x 3.88 m 25'11" x 12'9"

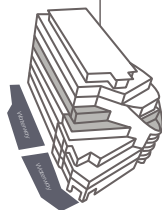
Terrace B
6.50 m x 3.27 m 21'4" x 10'9"

Total Internal Area

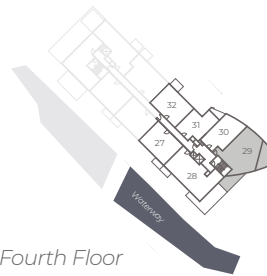
89.22 sq. mts. 960 sq. ft.



Tre Archi Apartments



Floor Locator



Fourth Floor

◀ Point from which maximum dimensions are measured. Dimensions are intended for guidance only and may vary by plus or minus 7.6cm/3". The plots indicate general layout only which may vary from other plots. Kitchen and bathroom layouts indicative only. W denotes Wardrobe. LC denotes Linen Cupboard. S denotes Storage. E/S denotes En-Suite. W/S denotes Workstation. (h) denotes Handed. Please contact sales consultant for more information.