



## WATERSIDE QUARTER TRE ARCHI | CORE 2



## APARTMENTS 32, 38

Two bedroom apartments

Having a private outside space is a real bonus in a home, whether you want a quiet coffee at breakfast or a break while working from home. Situated on the fourth and fifth floor, these apartments boast a lovely private balcony, leading out from the main living space. The open-plan design of the stylish kitchen/dining/living area makes entertaining a pleasure, with room for a workstation. The kitchen benefits from sleek, high-specification, integrated appliances, with ample storage off the hallway.

Bedroom one enjoys a luxury en-suite and fitted wardrobes. Bedroom two, also a double, has its own fitted wardrobe, with a contemporary bathroom just across the hallway. These Tre Archi homes come with a range of additional benefits including private underground gated parking and car charging points.

Total internal area: 62.23 sq. mts. 670 sq. ft.



# WATERSIDE QUARTER TRE ARCHI | CORE 2

## APARTMENTS 32, 38 ▶

Two bedroom

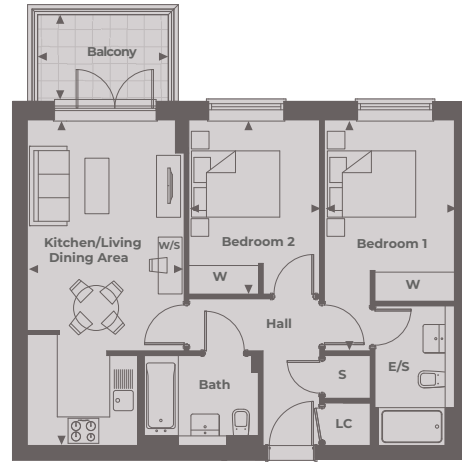
**Kitchen/Dining/Living Area**  
6.90 m x 3.30 m 22'7" x 10'9"

**Bedroom 1**  
4.90 m x 2.80 m 16'0" x 9'2"

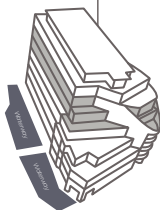
**Bedroom 2**  
3.80 m x 2.80 m 12'5" x 9'2"

**Balcony**  
2.75 m x 1.85 m 9'0" x 6'1"

**Total Internal Area**  
62.23 sq. mts. 670 sq. ft.



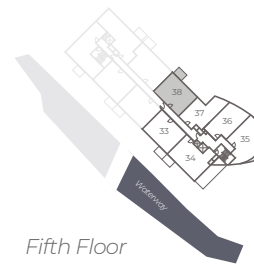
Tre Archi Apartments



Floor Locator



Fourth Floor



Fifth Floor

◀ Point from which maximum dimensions are measured. Dimensions are intended for guidance only and may vary by plus or minus 7.6cm/3". The plots indicate general layout only which may vary from other plots. Kitchen and bathroom layouts indicative only. W denotes Wardrobe. LC denotes Linen Cupboard. S denotes Storage. E/S denotes En-Suite. W/S denotes Workstation. (h) denotes Handed. Please contact sales consultant for more information.