



LIGHTFIELD

HIGH ST. BARNET, LONDON



APARTMENT 27 & 38

ONE BEDROOM

A STUNNING ONE BEDROOM APARTMENT STYLISHLY DESIGNED TO MAXIMISE SPACE FOR EVERYDAY LIFESTYLES. YOU WILL FIND AN OPEN PLAN KITCHEN/LIVING/DINING AREA WITH A LARGE BALCONY, AN AREA FOR HOMEWORKING AND A SPACIOUS BEDROOM ALL JUST 30 MINUTES AWAY FROM THE CITY.

Total Internal Area
53.8 sq m | 579 sq ft



LIGHTFIELD

HIGH ST. BARNET, LONDON

APARTMENT 27 & 38

ONE BEDROOM

Kitchen/Living/Dining Area

6.40m x 3.50m 20'1" x 11'5"

Bedroom

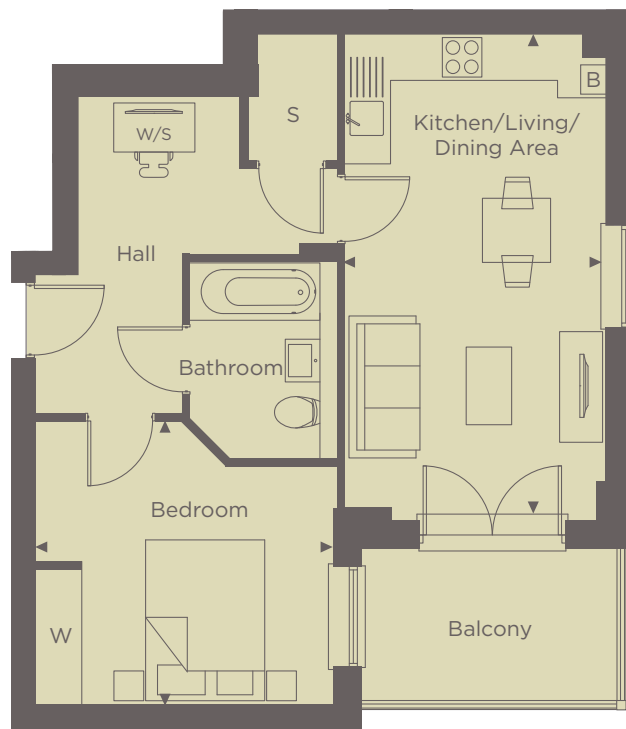
3.90m x 3.70m 12'8" x 12'1"

Balcony

3.38m x 2.00m 11'1" x 6'6"

Internal Area

53.8 sq m 579 sq ft



◀ Point from which maximum dimensions are measured. Dimensions are intended for guidance only and may vary by plus or minus 7.6cm/3". The plots indicate general layout only which may vary from other plots. Kitchen and bathroom layouts indicative only. W denotes wardrobe. S denotes storage. E/S denotes en-suite. W/S denotes workstation. L denotes lift. Please contact sales consultant for more information.

For more information please call 01494 685825 or shanlyhomes.com

SHANLY
HOMES