



LIGHTFIELD

HIGH ST. BARNET, LONDON



PENTHOUSE 54

TWO BEDROOM

A STUNNING TWO BEDROOM PENTHOUSE APARTMENT STYLISHLY DESIGNED TO MAXIMISE SPACE FOR EVERYDAY LIFESTYLES. YOU WILL FIND AN OPEN PLAN KITCHEN/LIVING/DINING AREA WITH A LARGE TERRACE, AN AREA FOR HOMEWORKING AND SPACIOUS BEDROOMS ALL JUST 30 MINUTES AWAY FROM THE CITY.

Total Internal Area
78.7 sq m | 847 sq ft



LIGHTFIELD

HIGH ST. BARNET, LONDON

PENTHOUSE 54

TWO BEDROOM

Kitchen/Living/Dining Area

5.90m x 5.70m 19'6" x 18'7"

Bedroom 1

5.40m x 2.70m 17'7" x 8'9"

Bedroom 2

4.30m x 2.90m 14'1" x 9'5"

Terrace

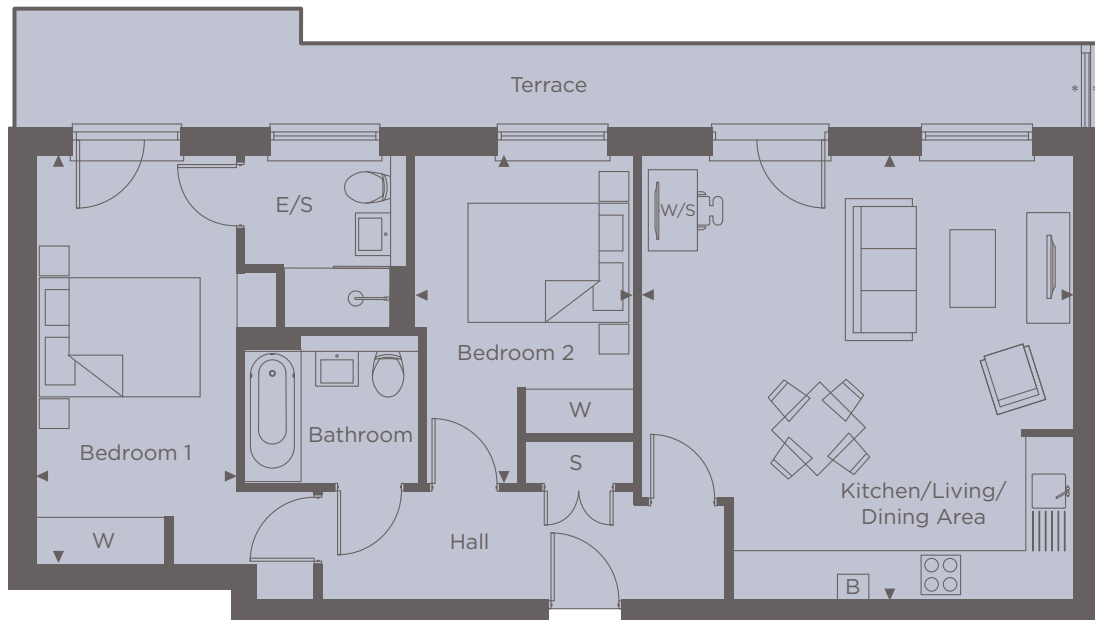
14.0m x 1.12m 45'9" x 3'7"

Internal Area

78.7 sq m

847 sq ft

* Privacy screen



◀ Point from which maximum dimensions are measured. Dimensions are intended for guidance only and may vary by plus or minus 7.6cm/3". The plots indicate general layout only which may vary from other plots. Kitchen and bathroom layouts indicative only. W denotes wardrobe. S denotes storage. E/S denotes en-suite. W/S denotes workstation. L denotes lift. Please contact sales consultant for more information.

For more information please call 01494 685825 or shanlyhomes.com

SHANLY
HOMES